

WAAS CH <b>90500</b> <b>W18A</b>	APP CRS <b>183°</b>	Rwy Idg TDZE Apt Elev	<b>4806</b> <b>553</b> <b>569</b>
--	------------------------	-----------------------------	---

# RNAV (GPS) RWY 18

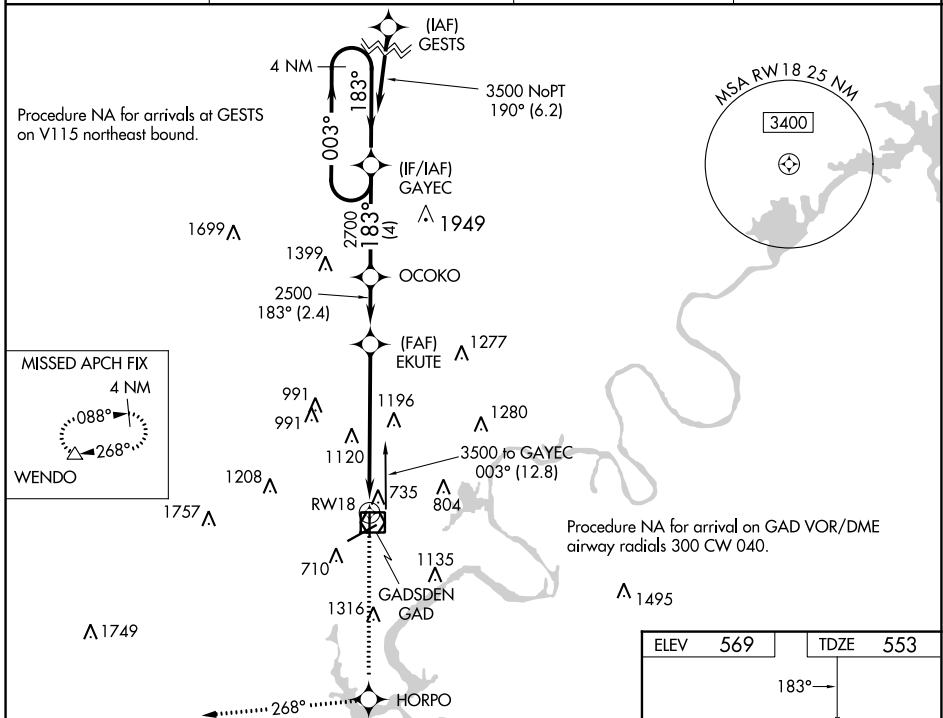
NORTHEAST ALABAMA RGNL (GAD)

RNP APCH.

▼ Baro-VNAV NA when using Anniston altimeter setting. For uncompensated Baro-VNAV systems, LNAV/VNAV NA below -16°C or above 54°C. Rwy 18 helicopter visibility reduction below ¾ SM NA. When local altimeter not setting received, use Anniston altimeter setting and increase all DAs 66 feet and all MDAs 80 feet.

MISSED APPROACH: Climb to 3600 direct HORPO and on track 268° to WENDO and hold.

AWOS-3PT <b>127.825</b>	BIRMINGHAM APP CON <b>125.45 279.65</b>	CLNC DEL <b>120.05 257.7</b>	UNICOM <b>122.8 (CTAF)</b>
----------------------------	--	---------------------------------	-------------------------------



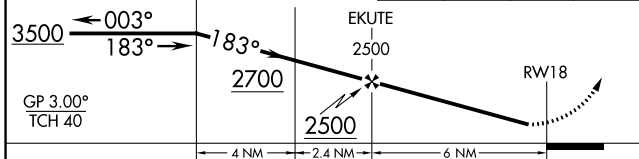
VGSI and RNAV glidepath not coincident (VGSI Angle 2.75/TCH 42).

4 NM Holding Pattern

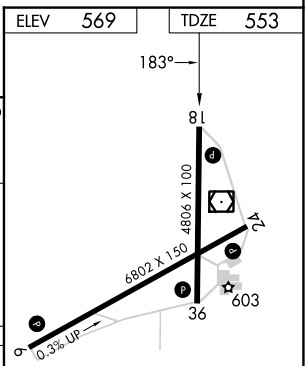
GAYEC OCOKO EKUTE RWY 18

3600 HORPO WENDO

↑ Ir 268°



CATEGORY	A	B	C	D
LPV DA		847-1	294 (300-1)	
LNAV/VNAV DA		1539-4	986 (1000-4)	
LNAV MDA	1560-1¼ 1007 (1000-1¼)	1560-1½ 1007 (1000-1½)	1560-3	1007 (1000-3)
CIRCLING	1560-1¼ 991 (1000-1¼)	1560-1½ 991 (1000-1½)	1560-3 991 (1000-3)	1680-3 1111 (1200-3)



- HIRL Rwy 6-24
- MIRL Rwy 18-36
- REIL Rwy 6 and 24

SE-4, 31 OCT 2024 to 28 NOV 2024

SE-4, 31 OCT 2024 to 28 NOV 2024