

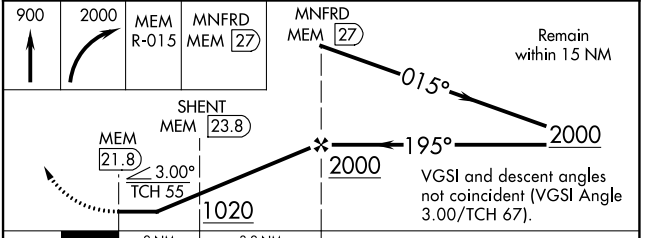
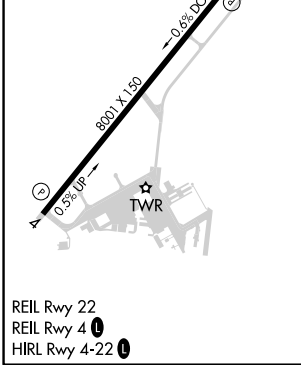
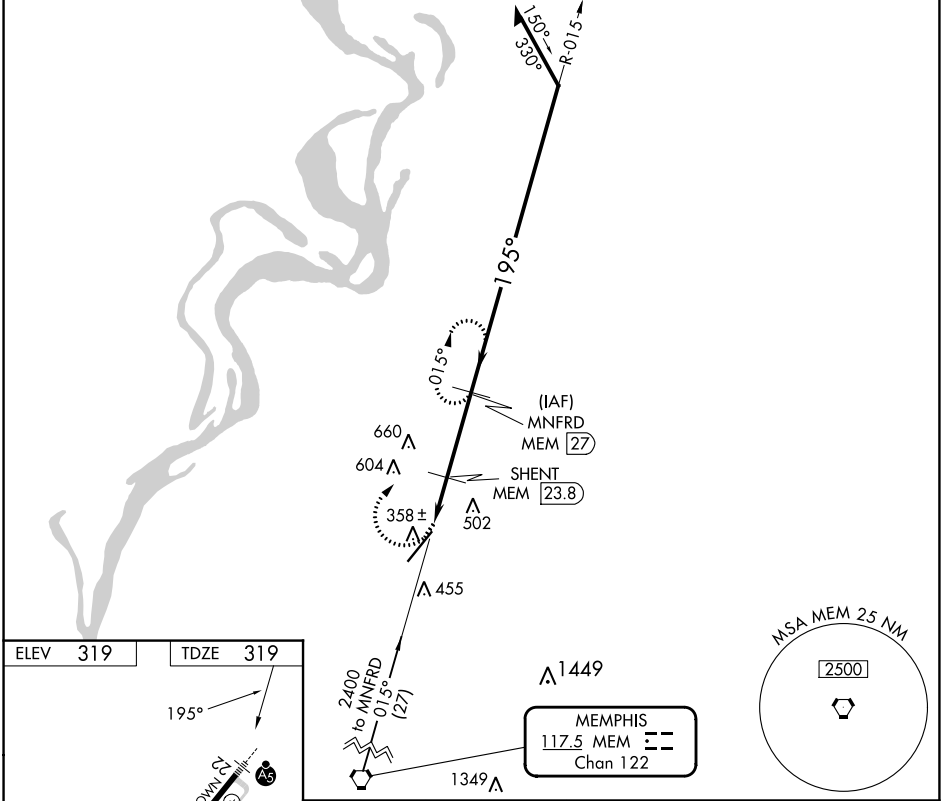
VORTAC MEM 117.5 Chan 122	APP CRS 195°	Rwy Idg TDZE Apt Elev	8001 319 319
---	------------------------	-----------------------------	---

VOR or TACAN RWY 22

MILLINGTON/MEMPHIS (NQA)

DME required.	MALSR	MISSED APPROACH: Climb to 900, then climbing right turn to 2000 on MEM VORTAC R-015 to MNFRD/27 DME and hold, continue climb-in-hold to 2000.
▼ Rwy 22 helicopter visibility reduction below ¼ SM NA. ▲ Inop table does not apply.		

AWOS-3 118.925	MEMPHIS APP CON 119.1 291.6 125.8 338.3 (176°-355°) (356°-175°)	MILLINGTON TOWER ★ 120.25 (CTAF) 0 340.2	GND CON 121.375	UNICOM 122.95
--------------------------	---	--	---------------------------	-------------------------



CATEGORY	A	B	C	D	E
S-22	880-1	561 (600-1)	880-1½ 561 (600-1½)		
CIRCLING	880-1	561 (600-1)	920-1¾ 601 (700-1¾)	960-2 641 (700-2)	960-2¼ 641 (700-2¼)

SE-1, 31 OCT 2024 to 28 NOV 2024

SE-1, 31 OCT 2024 to 28 NOV 2024