

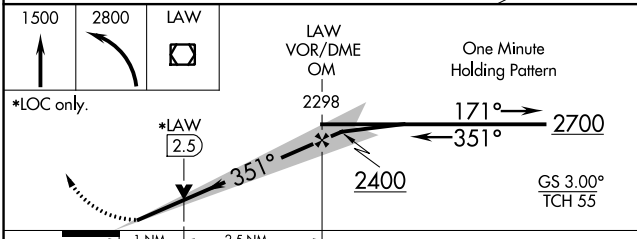
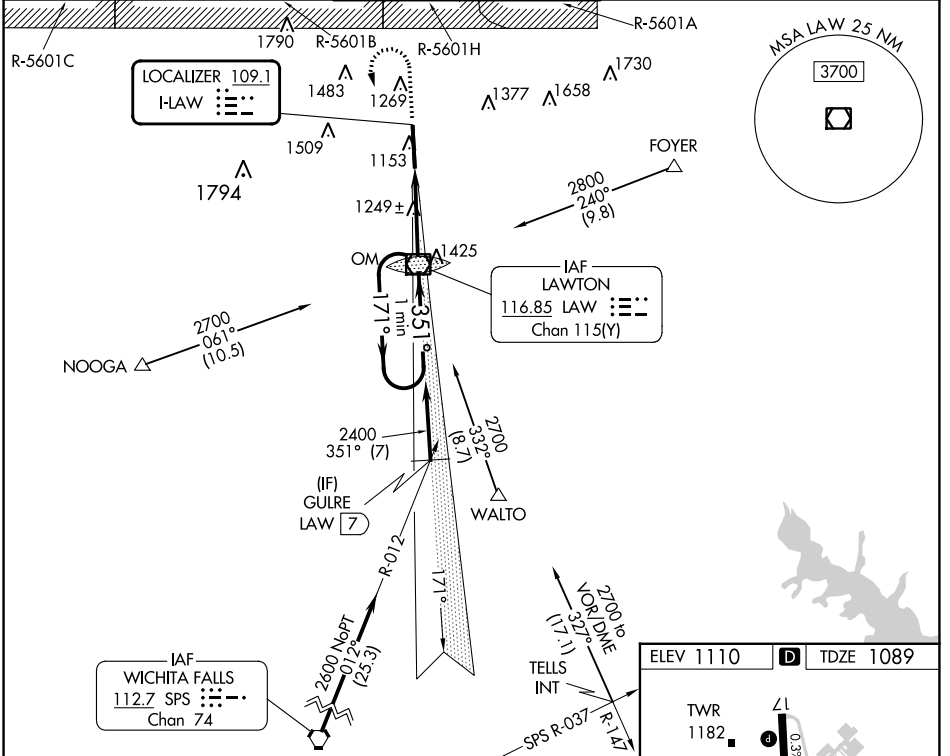
LOC I-LAW 109.1	APP CRS 351°	Rwy Idg 8599
		TDZE 1089
		Apt Elev 1110

ILS or LOC RWY 35

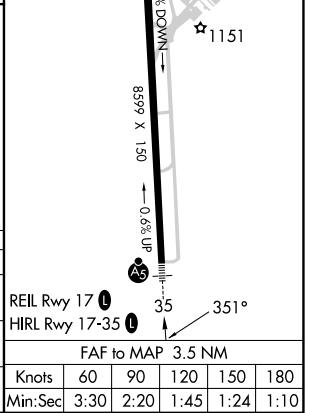
LAWTON-FORT SILL RGNL (LAW)

<p>ASR</p> <p>Autopilot coupled approach NA below 2000. For inop ALS, increase S-LOC 35 Cat C/D visibility to 1½ SM</p>	<p>MALSR</p>	<p>MISSED APPROACH: Climb to 1500 then climbing left turn to 2800 direct LAW VOR/DME and hold, continue climb-in-hold to 2800.</p>
--	---------------------	---

ATIS 120.75	FORT SILL APP CON 120.55 322.4	LAWTON TOWER * 119.9(CTAF) 257.8	GND CON 121.9	UNICOM 122.95
-----------------------	--	--	-------------------------	-------------------------



ELEV 1110	D	TDZE 1089
TWR 1182		



CATEGORY	A	B	C	D
S-ILS 35	1289-½		200 (200-½)	
S-LOC 35	1500-½	411 (400-½)	1500-¾	411 (400-¾)
C CIRCLING	1620-1	510 (600-1)	1820-2	1820-2¼
			710 (800-2)	710 (800-2¼)

SC-1, 31 OCT 2024 to 28 NOV 2024

SC-1, 31 OCT 2024 to 28 NOV 2024