

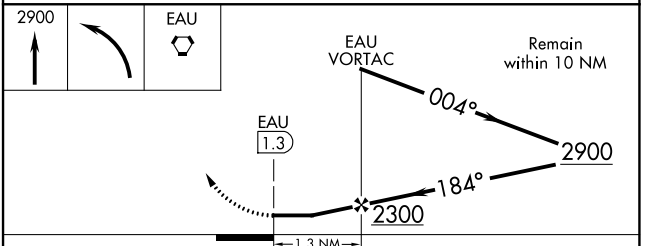
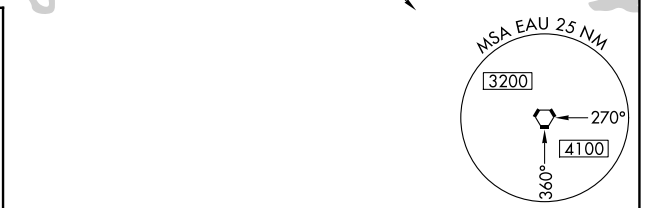
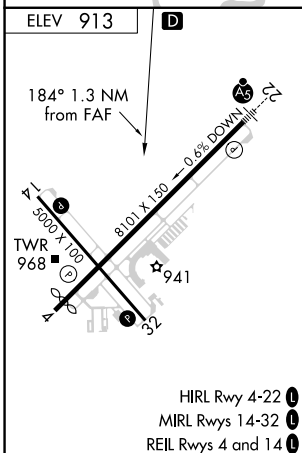
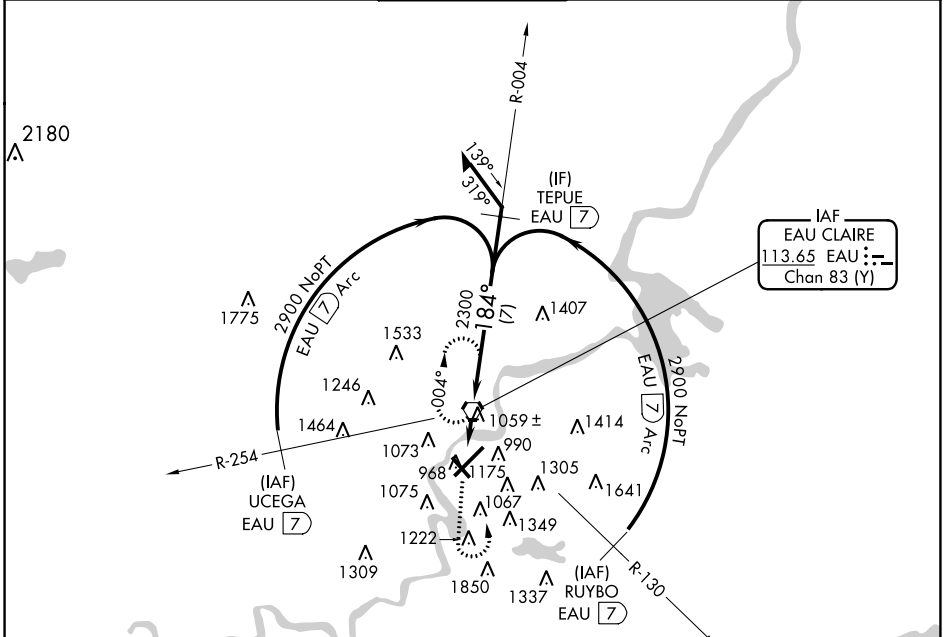
VORTAC EAU 113.65 Chan 83 (Y)	APP CRS 184°	Rwy ldg TDZE Apt Elev N/A N/A 913
---	------------------------	---

VOR-A
CHIPPEWA VALLEY RGNL (EAU)

⚠ Visibility reduction by helicopters NA. When local altimeter setting not received, use Rice Lake altimeter setting and increase all MDA 120 feet, increase Circling Cat A and B visibility ¼ mile and Cat C visibility ½ mile.

MISSED APPROACH: Climb to 2900 then left turn direct EAU VORTAC and hold.

ATIS 126.025	MINNEAPOLIS CENTER 125.3 335.6	EAU CLAIRE TOWER ★ 118.575 (CTAF) 0	GND CON 120.925	UNICOM 122.95
------------------------	--	---	---------------------------	-------------------------



FAF to MAP 1.3 NM					
Knots	60	90	120	150	180
Min:Sec	1:18	0:52	0:39	0:31	0:26
CATEGORY	A	B	C	D	
CIRCLING	1780-1 867 (900-1)	1780-1¼ 867 (900-1¼)	1780-2½ 867 (900-2½)	2200-3 1287 (1300-3)	

EC-3, 31 OCT 2024 to 28 NOV 2024

EC-3, 31 OCT 2024 to 28 NOV 2024