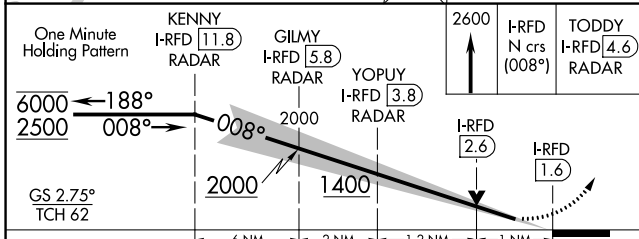
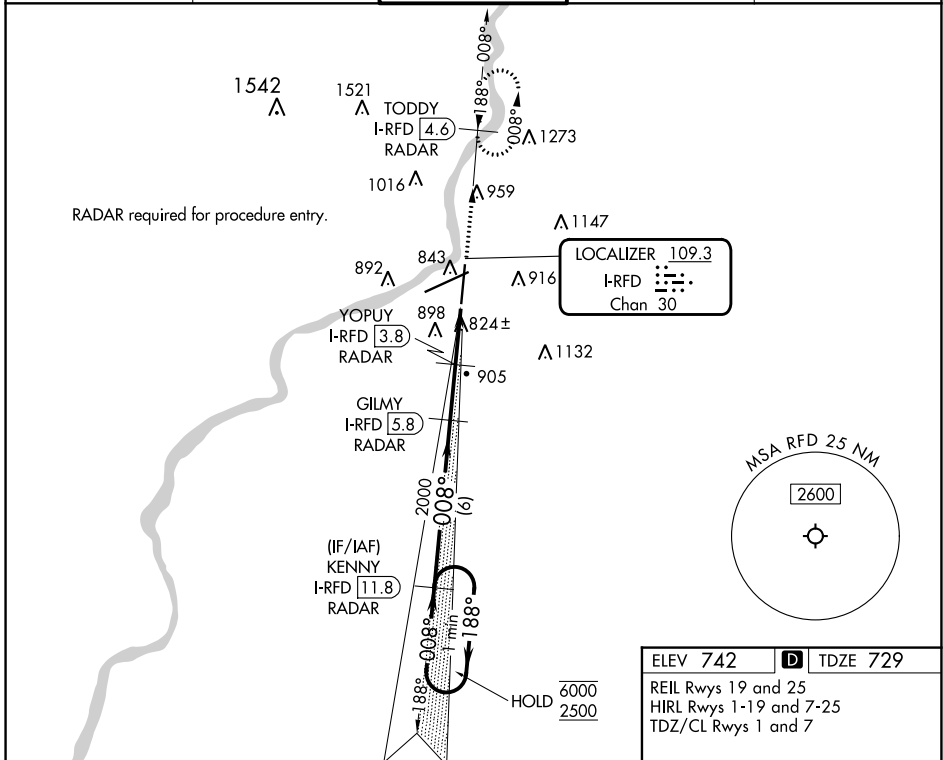


LOC/DME I-RFD 109.3 Chan 30	APP CRS 008°	Rwy Idg 8199 TDZE 729 Apt Elev 742
------------------------------------------	------------------------	---------------------------------------------------------------

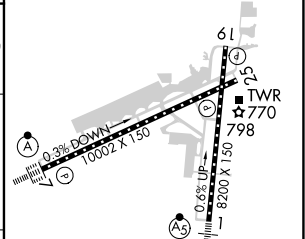
ILS or LOC RWY 1
CHICAGO/ROCKFORD INTL (RFD)

DME or RADAR required.		MALSR 	MISSED APPROACH: Climb to 2600 on I-RFD localizer N course (008°) to TODDY/4.6 DME/RADAR and hold, continue climb-in-hold to 2600.
------------------------	--	-----------	------------------------------------------------------------------------------------------------------------------------------------

ATIS 127.6	ROCKFORD APP CON 121.0 327.0	ROCKFORD TOWER 118.1 290.375	GND CON 121.9 290.375	CLNC DEL 119.25
----------------------	----------------------------------------	-----------------------------------------------	---------------------------------	---------------------------



ELEV 742	D TDZE 729
REIL Rwy 19 and 25 HIRL Rwy 1-19 and 7-25 TDZ/CL Rwy 1 and 7	



One Minute Holding Pattern	KENNY I-RFD [11.8] RADAR	GILMY I-RFD [5.8] RADAR	YOPUY I-RFD [3.8] RADAR	2600 I-RFD N crs (008°)	TODDY I-RFD [4.6] RADAR
6000 ← 188°	2000	2000	1400	I-RFD [2.6]	I-RFD [1.6]
2500 → 008°	6 NM	2 NM	1.2 NM	1 NM	
GS 2.75° TCH 62					
CATEGORY	A	B	C	D	
S-ILS 1	929/18		200 (200-½)		
S-LOC 1	1080/24	351 (400-½)	1080/30	351 (400-¾)	
C CIRCLING	1220-1 478 (500-1)	1280-1 538 (600-1)	1320-1½ 578 (600-1½)	1460-2¼ 718 (800-2¼)	

FAF to MAP 4.2 NM					
Knots	60	90	120	150	180
Min:Sec	4:12	2:48	2:06	1:41	1:24

EC-3, 31 OCT 2024 to 28 NOV 2024

EC-3, 31 OCT 2024 to 28 NOV 2024