

LOC/DME I-RFD <b>109.3</b> Chan <b>30</b>	APP CRS <b>188°</b>	Rwy Idg <b>8099</b> TDZE <b>736</b> Apt Elev <b>742</b>
---	------------------------	---

# LOC BC RWY 19

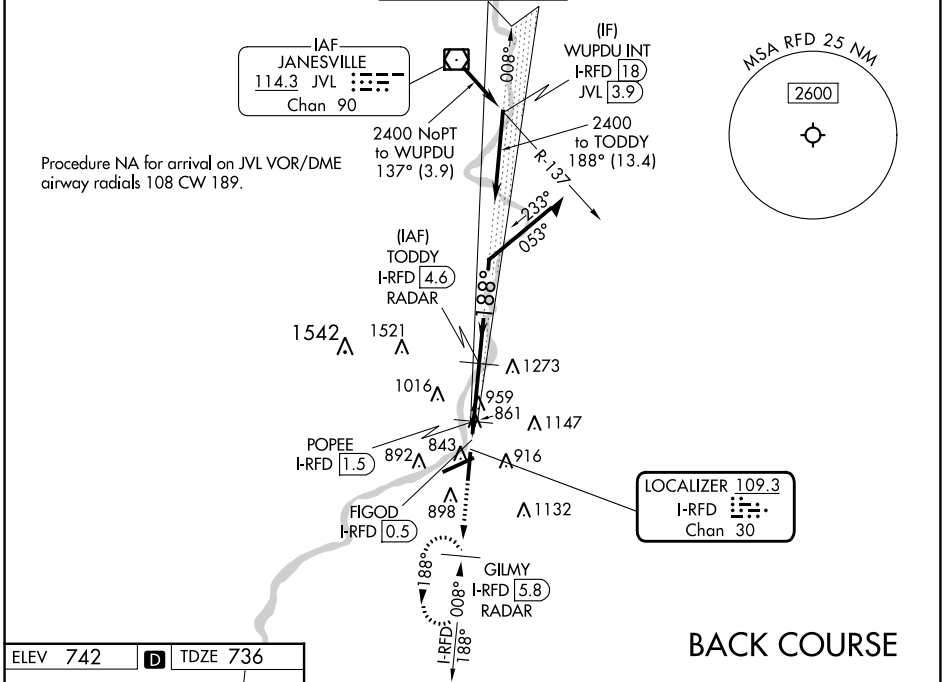
CHICAGO/ROCKFORD INTL (RFD)

DME or RADAR required.

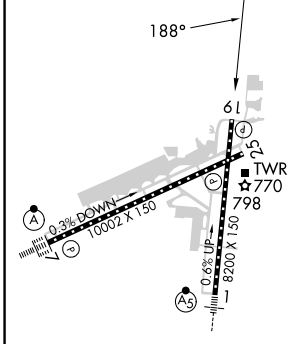
**ASR**

MISSED APPROACH: Climb to 2500 on I-RFD localizer course S (188°) to GILMY 5.8 DME/RADAR and hold, continue climb-in-hold to 2500.

ATIS <b>127.6</b>	ROCKFORD APP CON <b>121.0 327.0</b>	ROCKFORD TOWER <b>118.1 290.375</b>	GND CON <b>121.9 290.375</b>	CLNC DEL <b>119.25</b>
----------------------	--	--	---------------------------------	---------------------------



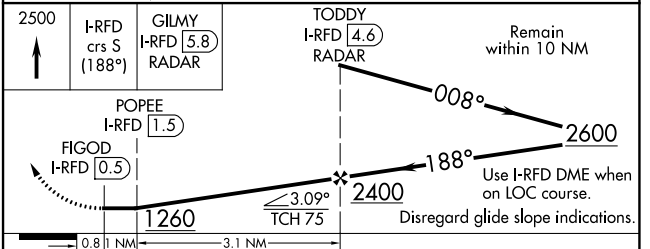
ELEV 742	<b>D</b>	TDZE 736
----------	----------	----------



REIL Rwy 19 and 25  
HIRL Rwy 1-19 and 7-25  
TDZ/CL Rwy 1 and 7

FAF to MAP 4.1 NM

Knots	60	90	120	150	180
Min:Sec	4:06	2:44	2:03	1:38	1:22



CATEGORY	A	B	C	D
S-19	1260-1 524 (600-1)		1260-1½ 524 (600-1½)	
<b>C</b> CIRCLING	1260-1 518 (600-1)	1280-1 538 (600-1)	1320-1½ 578 (600-1½)	1460-2¼ 718 (800-2¼)
POPEE FIX MINIMUMS (DME REQUIRED)				
S-19	1140-1 404 (400-1)		1140-1⅛ 404 (400-1⅛)	
<b>C</b> CIRCLING	1220-1 478 (500-1)	1280-1 538 (600-1)	1320-1½ 578 (600-1½)	1460-2¼ 718 (800-2¼)

EC-3, 31 OCT 2024 to 28 NOV 2024

EC-3, 31 OCT 2024 to 28 NOV 2024