

MARIETTA, GEORGIA

# RNAV (GPS) RWY 29

APCH CRS	Rwy Idg	10,002
289°	TDZE	1014
	Arprt Elev	1069

- (USAF)

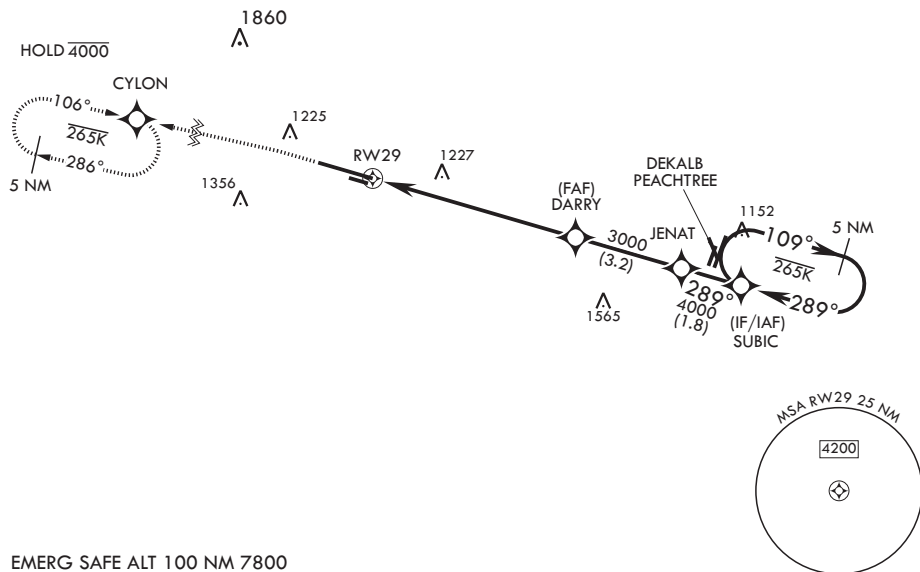
DOBBINS ARB (KMGE)

RNP APCH. DME/DME RNP- 0.3 NA	SALS	MISSED APPROACH: Climb to 2000 then climbing left turn to 3000 direct CYLON and hold.
<p>▼ * When ALS inop, increase vis to 1 3/8 miles.                  ** When ALS inop, increase CAT AB RVR to 55 and vis to 1 mile, CAT CDE vis to 1 3/8 miles.</p>	(A2)	

ATIS★ 269.5	ATLANTA APP CON/DEP CON 121.0 268.7	TOWER★ 120.75 370.875	GND CON 125.3 275.8	ASR
----------------	--	--------------------------	------------------------	-----

\*\*\* Circling not authorized N of Rwy 11-29 for CAT DE. Circling to assault strip not authorized.

For uncompensated Baro-VNAV systems, LNAV/VNAV NA below -17°C or above 54°C.



EMERG SAFE ALT 100 NM 7800

crs 289° 3000 CYLON 5 NM Holding Pattern ELEV 1069 TDZE 1014	JENAT SUBIC 289° 109° 4000 4000				
RWY29 1.5 NM to RWY29 3000 6.1 NM GP 3.00° TCH 58	BCN TW'R 10,002 x 300 110° 0.8% UP 349° x 60° 290° 0.8% UP ASSAULT STRIP HIRL all Rwys REIL Rwys 11, 29				
CATEGORY	A	B	C	D	E
LNAV/VNAV DA*	1480/60		466	(500-1½)	
LNAV MDA**	1520/40	506 (500-¾)	1520-1¼	506	(500-1¼)
CIRCLING***	1580-1 511 (600-1)	1620-1 551 (600-1)	1760-2 691 (700-2)	1760-2¼ 691 (700-2¼)	1760-2½ 691 (700-2½)

SE-4, 31 OCT 2024 to 28 NOV 2024

SE-4, 31 OCT 2024 to 28 NOV 2024

MARIETTA, GEORGIA

33°55'N - 84°31'W

DOBBINS ARB (KMGE)

Amdt 3 11JUL24

# RNAV (GPS) RWY 29