

TACAN RWY 29

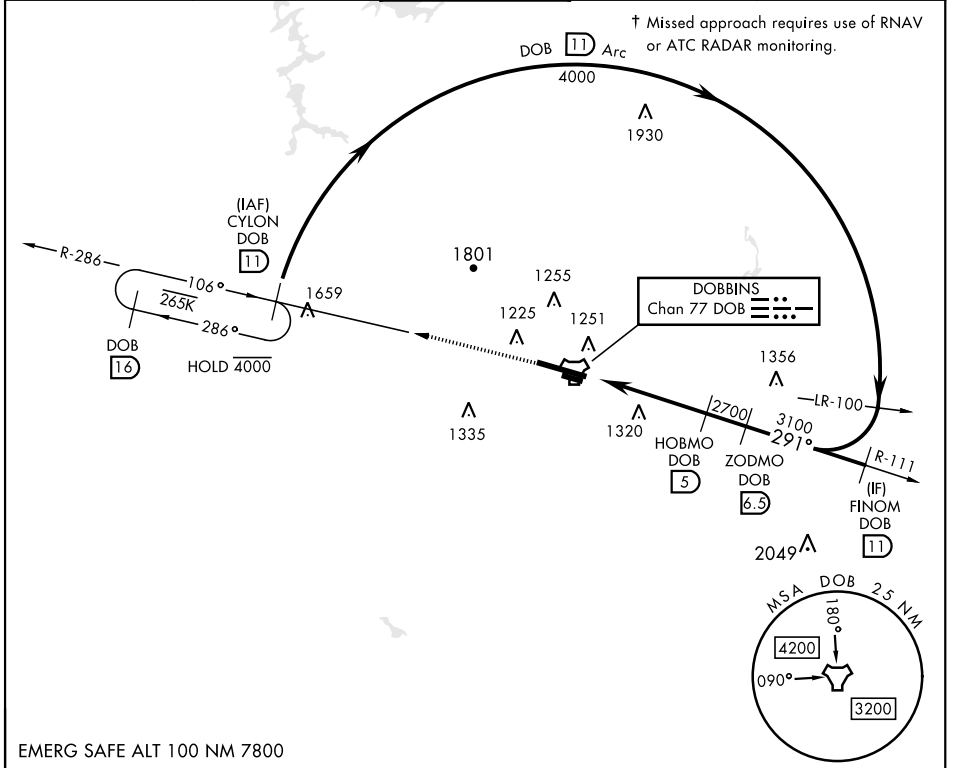
TACAN Chan 77	APCH CRS 291°	Rwy Idg 10,002 TDZE 1014 Arpt Elev 1069
----------------------	----------------------	--

[USAF]

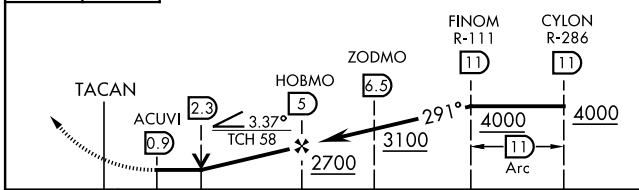
DOBBINS ARB (KMGE)

<p>▼ * When ALS inop, increase CAT AB RVR to 55 and vis to 1 mile, CAT CDE vis to 2 miles.</p> <p>** Circling not authorized N of Rwy 11-29 for CAT DE aircraft. Circling to assault strip not authorized.</p>	<p>SALSF (A2)</p>	<p>† MISSED APPROACH: Climb to 3000 on DOB TACAN R-286 to CYLON and hold.</p>
--	--------------------------	---

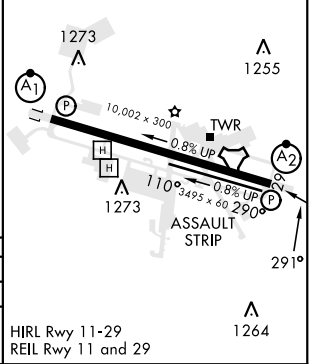
ATIS ★ 269.5	ATLANTA APP CON 121.0 268.7	TOWER ★ 120.75 370.875	GND CON 125.3 275.8	ASR
------------------------	---------------------------------------	----------------------------------	-------------------------------	-----



3000 DOB R-286	CYLON DOB 11	VGSI and descent angles not coincident. (VGSI Angle 3.00)
----------------	--------------	---



ELEV 1069	TDZE 1014
-----------	-----------



CATEGORY	A	B	C	D	E
S-29 *	1720/40 706 (700-¾)		1720-1¼ 706 (700-1¾)		
CIRCLING **	1720-1 651 (700-1)		1760-2 691 (700-2)	1760-2¼ 691 (700-2¼)	1760-2½ 691 (700-2½)

TACAN RWY 29

SE-4, 31 OCT 2024 to 28 NOV 2024

SE-4, 31 OCT 2024 to 28 NOV 2024