

WAAS CH <b>86604</b> <b>W25A</b>	APP CRS <b>245°</b>	Rwy ldg <b>4158</b> TDZE <b>144</b> Apt Elev <b>151</b>
--	------------------------	---

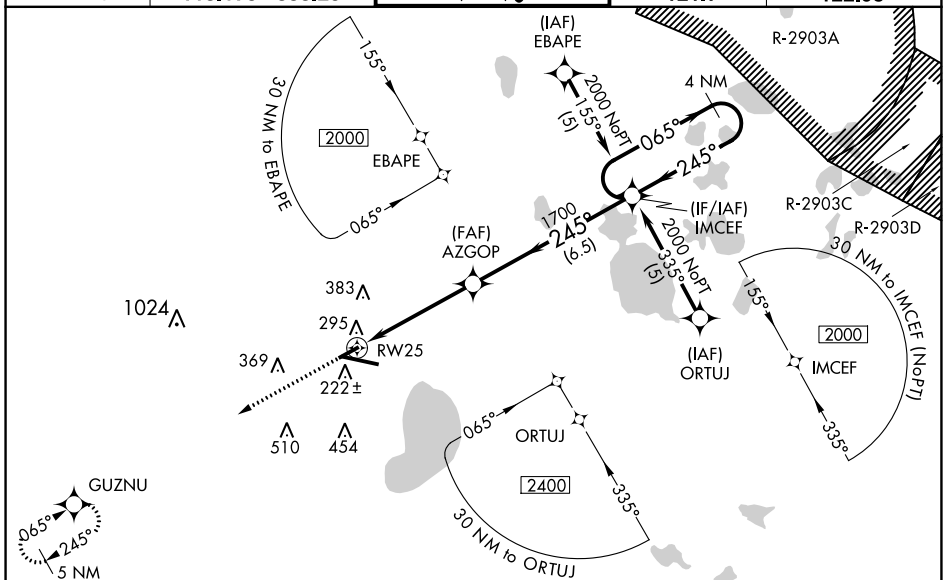
# RNAV (GPS) RWY 25

GAINESVILLE RGNL (GNV)

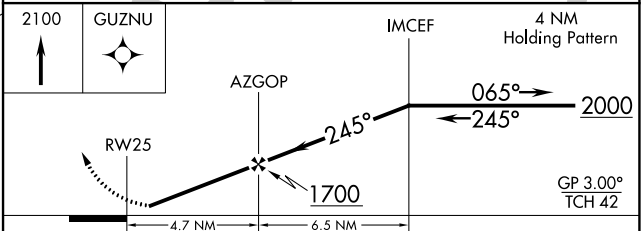
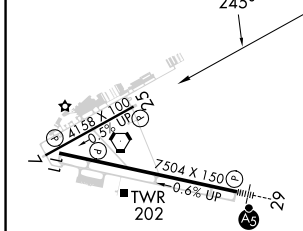
**⚠** Baro-VNAV NA when using Ocala Intl-Jim Taylor Fld altimeter setting. For uncompensated Baro-VNAV systems, LNAV/VNAV NA below -15° C (5° F) or above 48° C (118° F).  
**⚠** DME/DME RNP-0.3 NA. Visibility reduction by helicopters NA. When local altimeter setting not received, use Ocala Intl-Jim Taylor Fld altimeter setting and increase LPV DA to 582 feet and all Cats visibility ¼ SM; increase LNAV/VNAV DA to 775 feet and all Cats visibility ¼ SM; increase all MDAs 100 feet and increase LNAV Cat C and Circling Cat C visibility ¼ SM and LNAV Cat D and Circling Cat D ½ SM. When VGSI inoperative, straight-in/Circling Rwy 25 procedure NA at night.

**MISSED APPROACH:**  
Climb to 2100 direct GUZNU and hold.

ATIS <b>127.15</b>	JACKSONVILLE APP CON <b>118.175 338.25</b>	GAINESVILLE TOWER★ <b>119.55 (CTAF) 0 353.7</b>	GND CON <b>121.7</b>	UNICOM <b>122.95</b>
-----------------------	---	--	-------------------------	-------------------------



ELEV 151	TDZE 144
----------	----------



CATEGORY	A	B	C	D
LPV DA		501-1¼	357 (400-1¼)	
LNAV/VNAV DA		694-2	550 (600-2)	
LNAV MDA	560-1	416 (500-1)	560-1¼	416 (500-1¼)
CIRCLING	620-1 469 (500-1)	700-1 549 (600-1)	760-1¾ 609 (700-1¾)	820-2 669 (700-2)

REIL Rwy 11  
MIRL Rwy 7-25  
HIRL Rwy 11-29

SE-3, 31 OCT 2024 to 28 NOV 2024

SE-3, 31 OCT 2024 to 28 NOV 2024