

WAAS CH <b>93937</b> <b>W09A</b>	APP CRS <b>094°</b>	Rwy ldg TDZE Apt Elev	<b>6122</b> <b>778</b> <b>813</b>
--	------------------------	-----------------------------	---

# RNAV (GPS) RWY 9

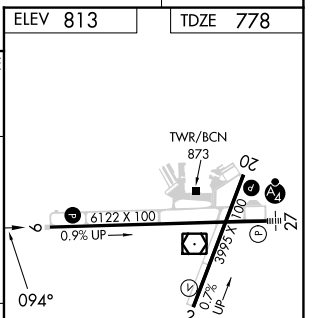
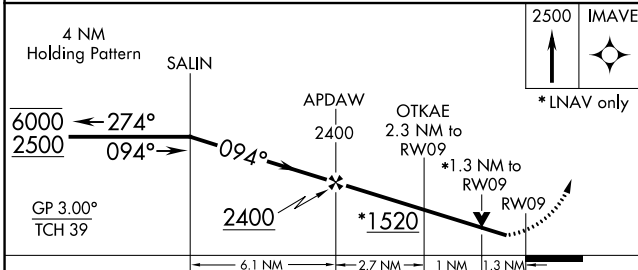
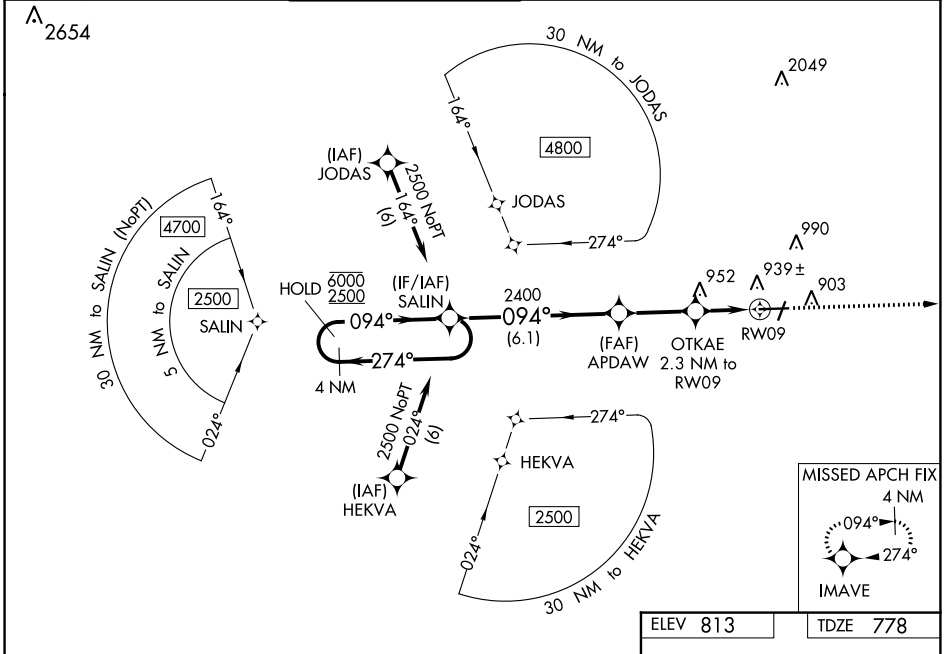
ATHENS/BEN EPPS (AHN)

RNP APCH.

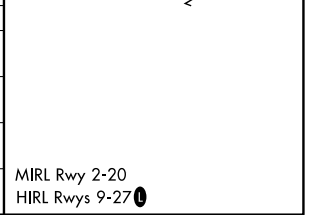
▼ Circling Rwy 2, 20 NA at night.  
For uncompensated Baro-VNAV systems, LNAV/VNAV NA below -8°C or above 54°C.  
Rwy 9 helicopter visibility reduction below ¼ SM NA.

MISSED APPROACH:  
Climb to 2500 direct  
IMAVE and hold.

ASOS <b>132.875</b>	ATLANTA APP CON * <b>132.475 291.1</b>	ATHENS TOWER * <b>126.3 (CTAF) 0 338.275</b>	GND CON <b>121.8</b>	CLNC DEL <b>121.8</b>	CLNC DEL <b>132.475 291.1</b> (when twr closed)	UNICOM <b>122.95</b>
------------------------	---	---	-------------------------	--------------------------	---	-------------------------



CATEGORY	A	B	C	D
LPV DA		1028-¾	250 (300-¾)	
LNAV/VNAV DA		1115-1	337 (400-1)	
LNAV MDA	1220-1	442 (500-1)	1220-1⅜	442 (500-1⅜)
CIRCLING	1260-1 447 (500-1)	1280-1 467 (500-1)	1320-1½ 507 (600-1½)	1460-2 647 (700-2)



SE-4, 31 OCT 2024 to 28 NOV 2024

SE-4, 31 OCT 2024 to 28 NOV 2024