

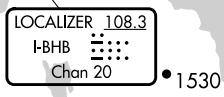
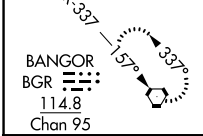
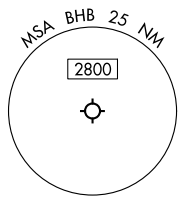
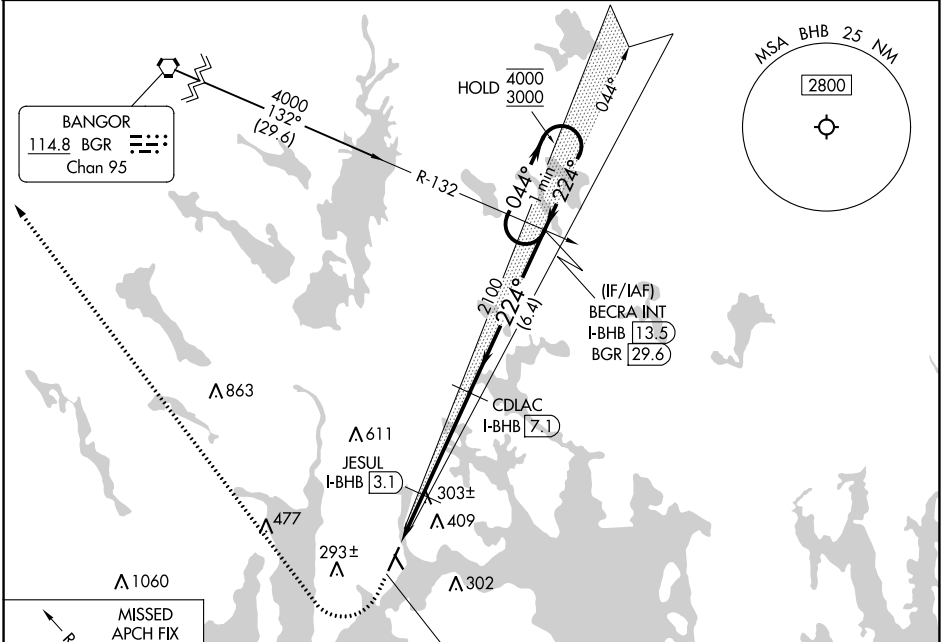
LOC/DME I-BHB 108.3 Chan 20	APP CRS 224°	Rwy ldg 5200 TDZE 83 Apt Elev 83
---	------------------------	---

ILS or LOC RWY 22

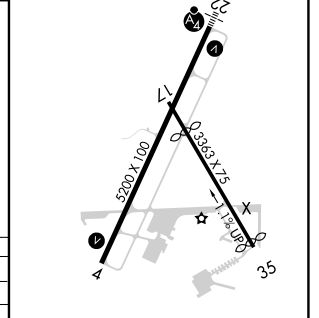
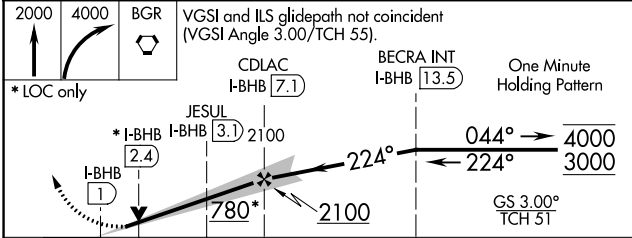
HANCOCK COUNTY/BAR HARBOR (BHB)

DME required.	MALSF	MISSED APPROACH: Climb to 2000 then climbing right turn to 4000 direct BGR VORTAC and hold.
<p>▼ Circling Rwy 17, 35 NA at night.</p> <p>▲ For inop ALS, increase S-LOC Cat C visibility to 1 3/8 SM. Autopilot coupled approach NA below 900 feet MSL.</p>		

AWOS-3PT 118.35	BANGOR APP CON 133.6 284.65	CLNC DEL 119.9	UNICOM 123.0 (CTAF)	122.7
---------------------------	---------------------------------------	--------------------------	-------------------------------	--------------



ELEV 83	TDZE 83
REIL Rwy 4	HIRL Rwy 4-22



CATEGORY	A	B	C	D		
S-ILS 22	283-3/4		200 (200-3/4)			
S-LOC 22	580-3/4 497 (500-3/4)	580-1 1/4 497 (500-1 1/4)	580-1 1/2 497 (500-1 1/2)			
CIRCLING	600-1 517 (600-1)	720-1 637 (700-1)	720-1 3/4 637 (700-1 3/4)	840-2 1/2 757 (800-2 1/2)		
FAF to MAP 6.1 NM						
	Knots	60	90	120	150	180
	Min:Sec	6:06	4:04	3:03	2:26	2:02

NE-1, 31 OCT 2024 to 28 NOV 2024

NE-1, 31 OCT 2024 to 28 NOV 2024