

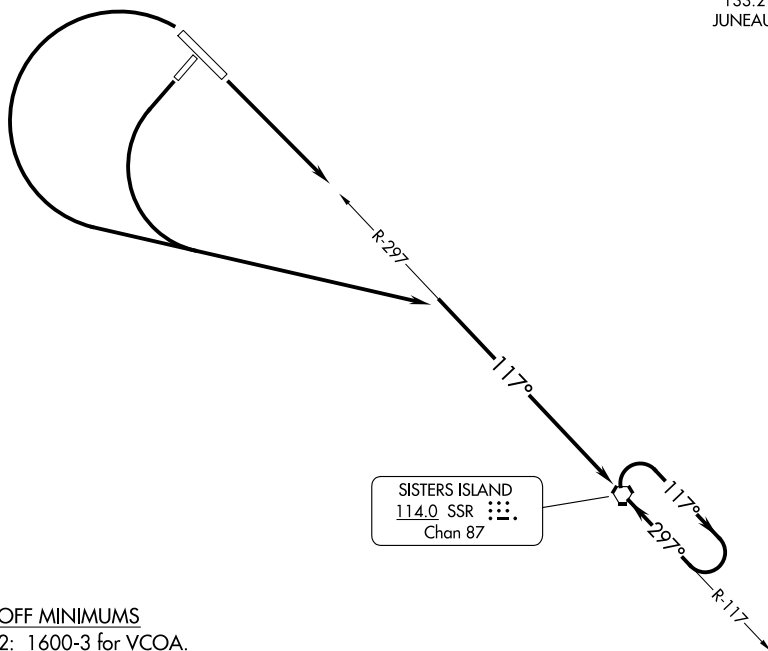
(GSTVS2.SSR) 23334

# GUSTAVUS TWO DEPARTURE (OBSTACLE)

AL-1192 (FAA)

GUSTAVUS (GST)(PAGS)  
GUSTAVUS, ALASKA

ANCHORAGE CENTER  
133.2 360.65  
JUNEAU RADIO  
122.65



### TAKEOFF MINIMUMS

Rwy 2: 1600-3 for VCOA.

Rwy 11: Standard with minimum climb of 230' per NM to 1000 or 1600-3 for VCOA.

Rwy 20: Standard with minimum climb of 215' per NM to 1100 or 1600-3 for VCOA.

Rwy 29: 300-1 $\frac{3}{4}$  or standard with minimum climb of 270' per NM to 300 or 1600-3 for VCOA.

(CONTINUED ON FOLLOWING PAGE)

NOTE: Chart not to scale.

### DEPARTURE ROUTE DESCRIPTION

TAKEOFF RUNWAY 2: VCOA.

TAKEOFF RUNWAY 11: Climb to at or above 4000 to intercept SSR R-297 to SSR VORTAC.

TAKEOFF RUNWAY 20: Climbing left turn to at or above 4000 to intercept SSR R-297 to SSR VORTAC.

TAKEOFF RUNWAY 29: Climbing left turn to at or above 4000 to intercept SSR R-297 to SSR VORTAC.

**VCOA ALL RUNWAYS:** Obtain ATC approval for VCOA when requesting IFR clearance. Climb in visual conditions to cross GUSTAVUS airport southeast bound at or above 1500, continue climb to at or above 4000 on SSR R-297 to SSR VORTAC.

# GUSTAVUS TWO DEPARTURE (OBSTACLE)

(GSTVS2.SSR) 07OCT21

GUSTAVUS, ALASKA  
GUSTAVUS (GST)(PAGS)

AK, 31 OCT 2024 to 26 DEC 2024

AK, 31 OCT 2024 to 26 DEC 2024