

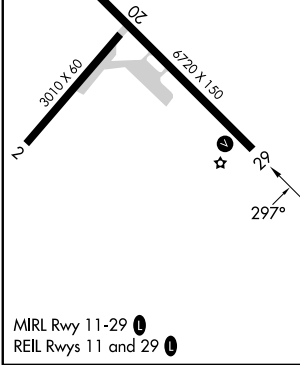
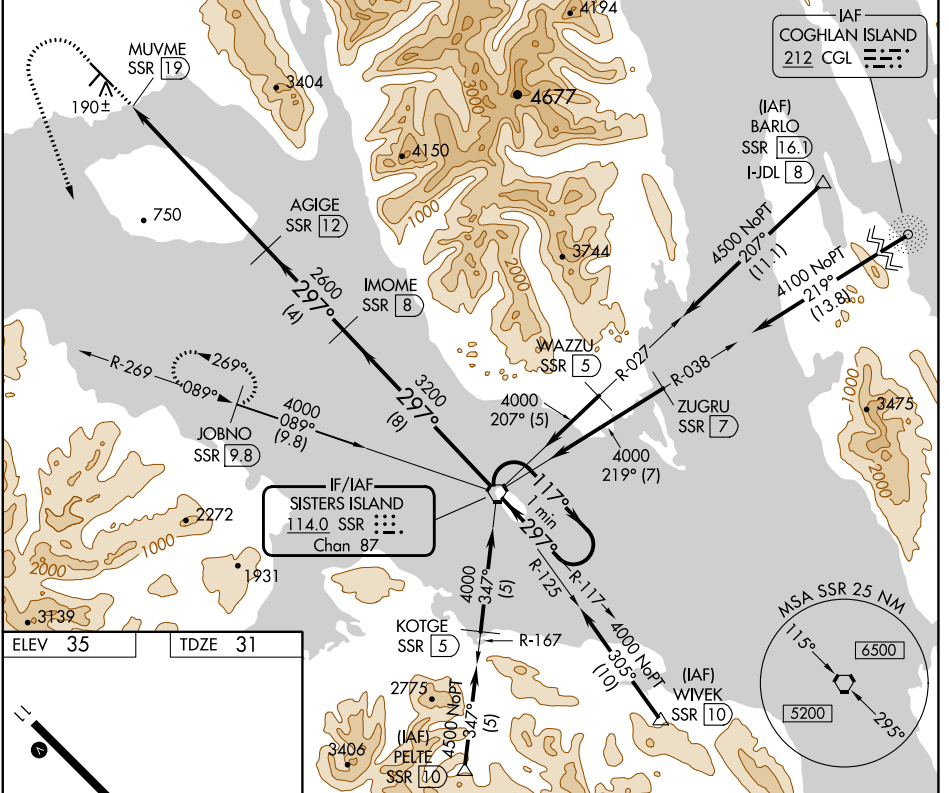
VORTAC SSR <b>114.0</b> Chan <b>87</b>	APP CRS <b>297°</b>	Rwy Idg <b>6720</b> TDZE <b>31</b> Apt Elev <b>35</b>
--	------------------------	--

# VOR/DME RWY 29

GUSTAVUS (GST)(PAGS)

**⚠** Circling NA northeast of Rwy 11-29.  
**❄** -17°C  
 MISSED APPROACH: Climb to 2000 then climbing left turn to 4000 on heading 140° and on SSR VORTAC R-269 to JOBNO/9.8 DME and hold.

AWOS-3P <b>125.9</b>	ANCHORAGE CENTER <b>133.2 360.65</b>	JUNEAU RADIO <b>122.65</b>	CTAF <b>122.5</b>
-------------------------	---	-------------------------------	----------------------



2000	4000	SSR R-269	JOBNO	VGSI and descent angles not coincident (VGSI Angle 3.00/TCH 39).	SSR VORTAC	One Minute Holding Pattern	
hdg 140°				IMOME SSR [8]			
MUVME SSR [19]	≤ 2.96° TCH 55	AGIGE SSR [12]		297°	117°	4000	
				3200		297°	
				2600			
				1 NM	7 NM	4 NM	8 NM
CATEGORY		A	B	C	D		
S-29		1260-1¼ 1229 (1300-1¼)	1260-1½ 1229 (1300-1½)	1260-3	1229 (1300-3)		
<b>C</b> CIRCLING		1260-1¼ 1225 (1300-1¼)	1260-1½ 1225 (1300-1½)	1260-3	1225 (1300-3)		

AK, 31 OCT 2024 to 26 DEC 2024

AK, 31 OCT 2024 to 26 DEC 2024