

ILS or LOC/DME RWY 10

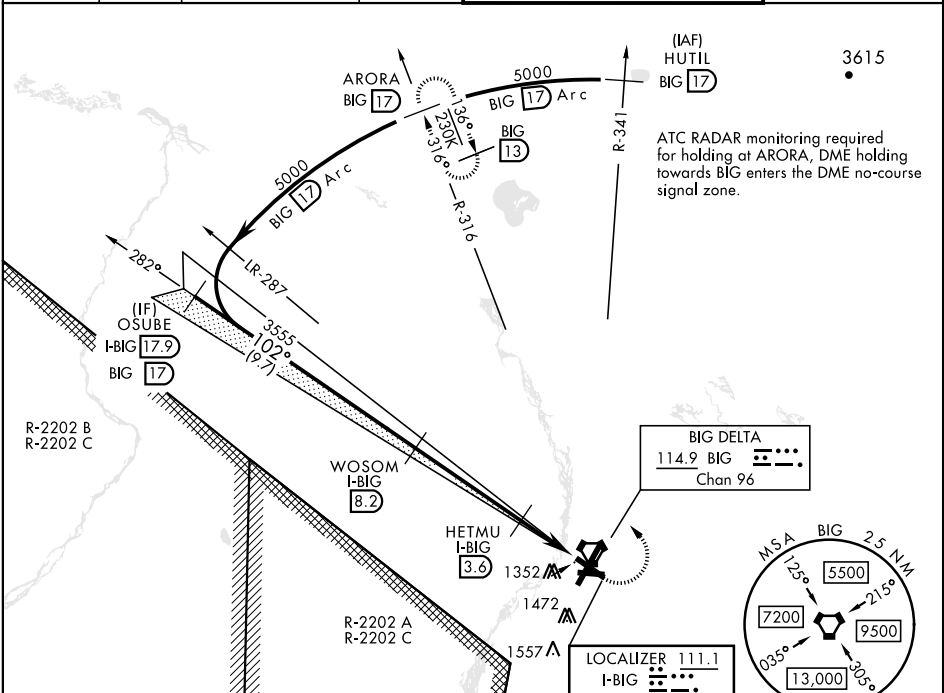
LOC/DME I-BIG 111.1 Chan 48	APCH CRS 102°	Rwy ldg TDZE Arpt Elev 6115 1253 1285
---	-------------------------	---

[USA]

ALLEN AAF (PABI)

DME required		* Circling not authorized East of Rwy 1-19.		MISSED APPROACH: Climb to 2200 then climbing left turn to 5000 via BIG R-316 to ARORA/BIG 17 DME and hold.	
--------------	--	---	--	--	--

ATIS 132.075	ASOS 135.65	ANCHORAGE CENTER 135.3 322.5	CTAF 122.90	TOWER ★ 119.8 235.775 40.8 (E) FM	GND CON 118.225 251.05
------------------------	-----------------------	--	-----------------------	---	----------------------------------

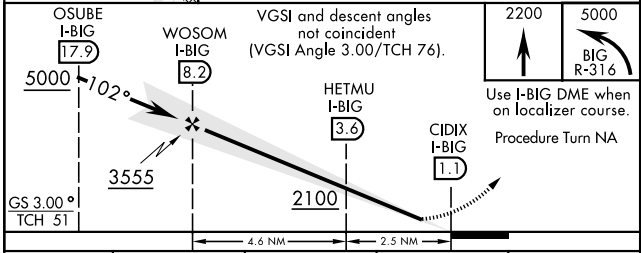
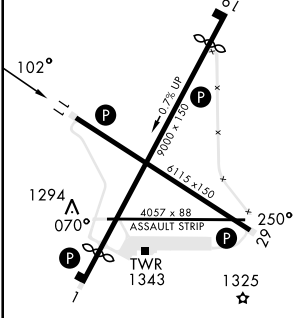


AK, 31 OCT 2024 to 26 DEC 2024

AK, 31 OCT 2024 to 26 DEC 2024

ELEV 1285	TDZE 1253
-----------	-----------

Rwy 1 ldg 8000'
Rwy 19 ldg 8000'



CATEGORY	A	B	C	D
S-ILS 11		1453-¾	200 (200-¾)	
S-LOC 11		1620-1	367 (400-1)	
C CIRCLING*	1740-1 455 (500-1)	1780-1 495 (500-1)	1860-1½ 575 (600-1½)	2040-2½ 755 (800-2½)

ILS or LOC/DME RWY 10