

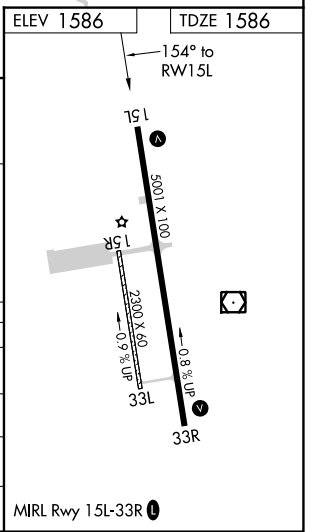
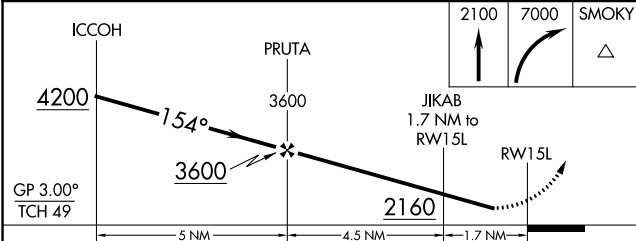
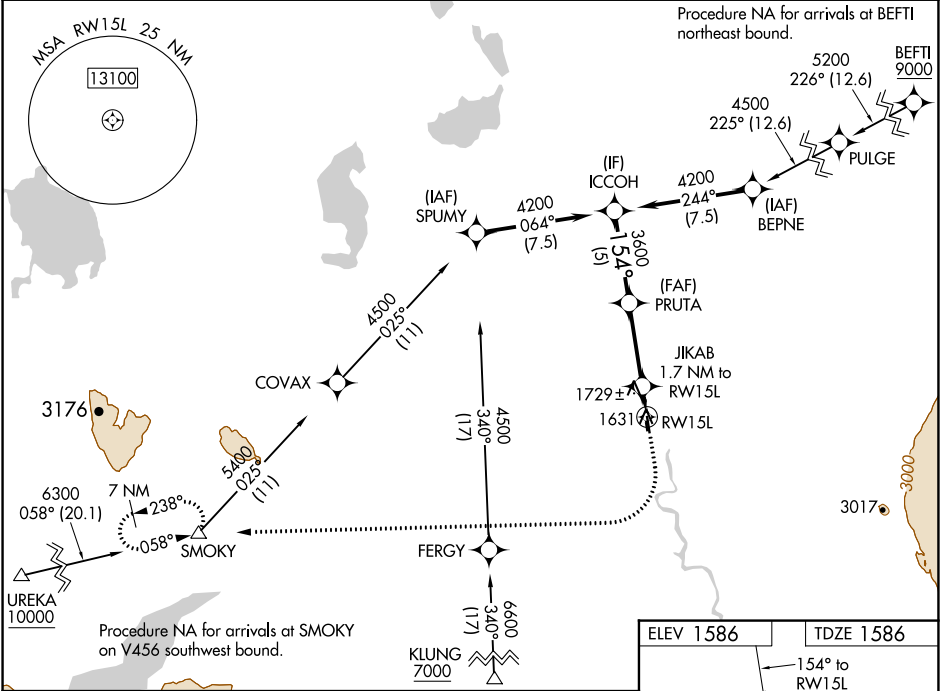
WAAS CH 82543 W15A	APP CRS 154°	Rwy Idg TDZE Apt Elev	5001 1586 1586
--	------------------------	-----------------------------	---

RNAV (GPS) RWY 15L

GULKANA (GKN) (PAGK)

RNP APCH-GPS.	<p>⚠ Circling Rwy 15R, 33L NA at night. Rwy 15L helicopter visibility reduction below ¾ SM NA. For uncompensated Baro-VNAV systems, LNAV/VNAV NA below -21°C or above 54°C.</p>	<p>MISSED APPROACH: Climb to 2100 then climbing right turn to 7000 direct SMOKY and hold, continue climb-in-hold to 7000.</p>
---------------	---	---

ASOS 134.85	ANCHORAGE CENTER 119.5 317.5	CTAF 122.9
-----------------------	--	----------------------



CATEGORY	A	B	C	D
LNAV/VNAV DA		1836-1	250 (300-1)	
LPV DA		1877-1	291 (300-1)	
LNAV MDA	2040-1	454 (500-1)	2040-1 ¾	454 (500-1 ¾)
C CIRCLING	2040-1 454 (500-1)	2080-1 494 (500-1)	2080-1 ½ 494 (500-1 ½)	2200-2 614 (700-2)

MIRL Rwy 15L-33R

AK, 31 OCT 2024 to 26 DEC 2024

AK, 31 OCT 2024 to 26 DEC 2024