

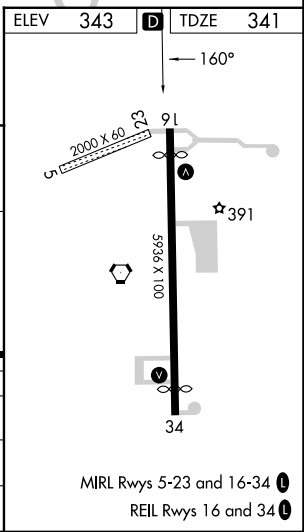
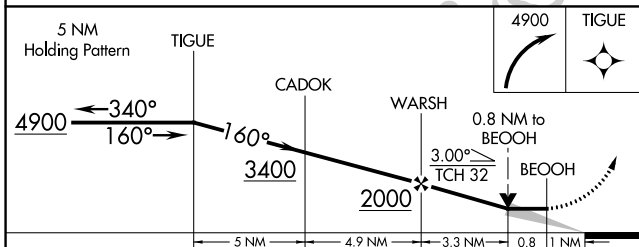
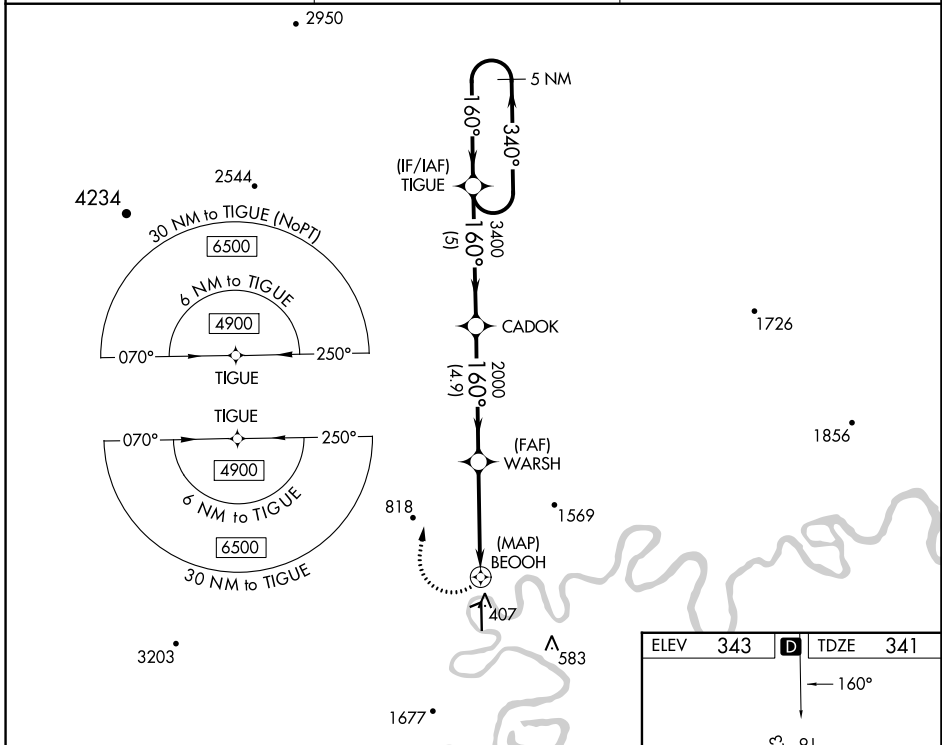
WAAS CH <b>90226</b> <b>W16A</b>	APP CRS <b>160°</b>	Rwy Idg <b>4843</b> TDZE <b>341</b> Apt Elev <b>343</b>
--	------------------------	---

# RNAV (GPS) RWY 16

MC GRATH (MCG) (PAMC)

RNP APCH-GPS.	MISSED APPROACH: Climbing right turn to 4900 direct TIGUE and hold, continue climb-in-hold to 4900.
<p>Circling NA for Cat D west of Rwy 16-34. -45°C</p>	

ASOS <b>135.65</b>	ANCHORAGE CENTER <b>128.1 353.8</b>	MCGRATH RADIO <b>123.6</b> (CTAF)
-----------------------	--	--------------------------------------



CATEGORY	A	B	C	D
LP MDA	960-1¼	619 (700-1¼)	960-1¾	619 (700-1¾)
LNAV MDA	960-1¼	619 (700-1¼)	960-1¾	619 (700-1¾)
CIRCLING	960-1¼	617 (700-1¼)	1460-3 1117 (1200-3)	1620-3 1277 (1300-3)

AK, 31 OCT 2024 to 26 DEC 2024

AK, 31 OCT 2024 to 26 DEC 2024