

GALENA, ALASKA

AL-1229 (FAA)

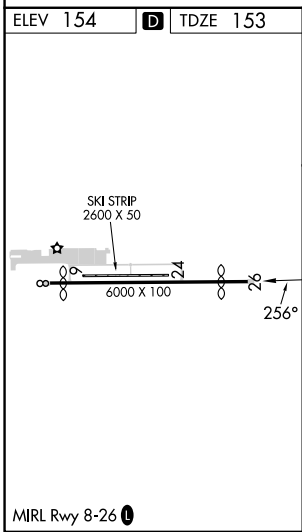
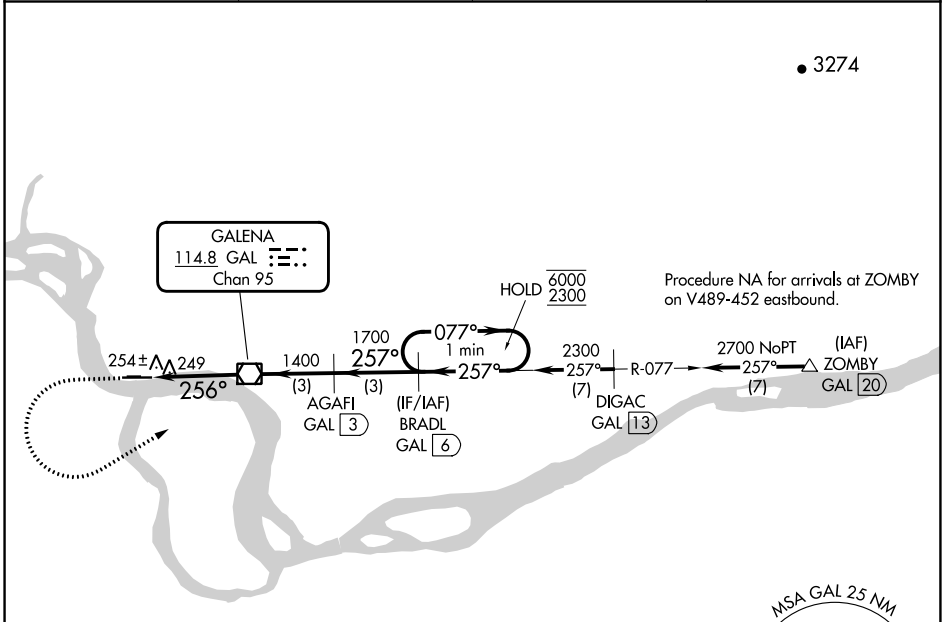
23278

VOR/DME GAL <b>114.8</b> Chan <b>95</b>	APP CRS <b>256°</b>	Rwy Idg TDZE Apt Elev	<b>5200</b> <b>153</b> <b>154</b>
---	------------------------	-----------------------------	---

# VOR RWY 26

EDWARD G PITKA SR (GAL)(PAGA)

DME required.		MISSED APPROACH: Climb to 600 then climbing left turn to 2300 on heading 047° and GAL VOR/DME R-077 to BRADL/6 DME and hold.	
AWOS-3P <b>132.525</b>	ANCHORAGE CENTER <b>127.0 290.2</b>	FAIRBANKS RADIO <b>122.2</b>	CTAF <b>123.0</b>



ELEV 154	<b>D</b>	TDZE 153				
600	2300	GAL R-077	BRADL GAL (6)	AGAFI GAL (3)	BRADL GAL (6)	One Minute Holding Pattern
hdg 047°	hdg 257°	hdg 256°	hdg 077°	hdg 257°	hdg 256°	hdg 077°
0.9	2.7 NM	3 NM	3 NM	3 NM	3 NM	3 NM
CATEGORY	A	B	C	D		
S-26	520-1 367 (400-1)					
CIRCLING	560-1 406 (500-1)	620-1 466 (500-1)	620-1½ 466 (500-1½)	740-2 586 (600-2)		

GALENA, ALASKA  
Orig 05OCT23

64°44'N-156°56'W

# VOR RWY 26

EDWARD G PITKA SR (GAL)(PAGA)

AK, 31 OCT 2024 to 26 DEC 2024

AK, 31 OCT 2024 to 26 DEC 2024