

APP CRS	Rwy Idg	4800
175°	TDZE	183
	Apt Elev	192

RNAV (GPS) RWY 18

ILIAMNA (ILI) (PAIL)

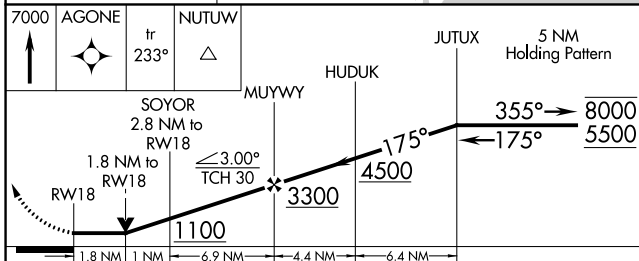
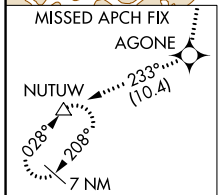
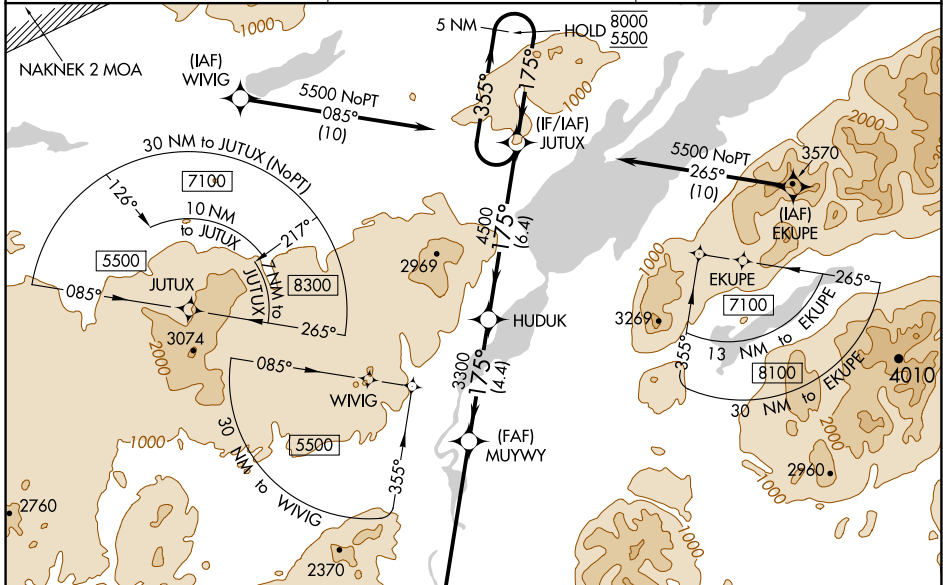
RNP APCH - GPS.

▼ Rwy 18 helicopter visibility reduction below 3/4 SM NA. When Iliamna altimeter setting not received, procedure NA.

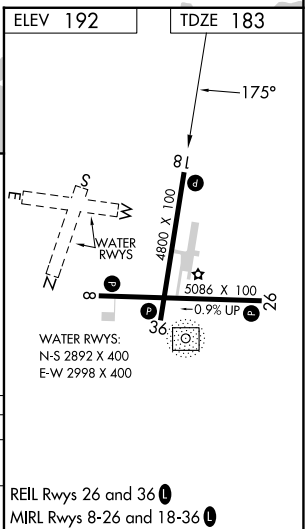
⚠ -26°C Circling NA to waterways N, S, E, W.

MISSED APPROACH: Climb to 7000 direct AGONE and on track 233° to NUTUW and hold, continue climb-in-hold to 7000.

AFIS 134.95	ANCHORAGE CENTER 118.8	ILIAMNA RADIO 123.6 (CTAF) 0
-----------------------	----------------------------------	--



CATEGORY	A	B	C	D
LNVA MDA	780-1 597 (600-1)		780-1 3/4 597 (600-1 3/4)	
C CIRCLING	780-1 588 (600-1)		820-1 3/4 628 (700-1 3/4)	1700-3 1508 (1600-3)



AK, 31 OCT 2024 to 26 DEC 2024

AK, 31 OCT 2024 to 26 DEC 2024