

WAAS CH <b>82110</b> <b>W36A</b>	APP CRS <b>355°</b>	Rwy Idg <b>4800</b> TDZE <b>179</b> Apt Elev <b>192</b>
--	------------------------	---

# RNAV (GPS) RWY 36

ILIAMNA (ILI) (PAIL)

RNP APCH - GPS.

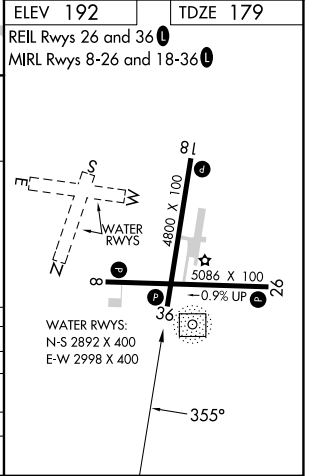
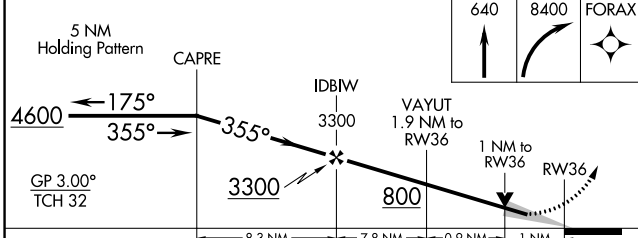
**⚠** For uncompensated Baro-VNAV systems, procedure NA below -21°C or above 54°C. When local altimeter setting not received, **⚠** -26°C procedure NA. Circling NA to waterways N, S, E, W.

**MISSED APPROACH:** Climb to 640 then climbing right turn to 8400 direct FORAX and hold, continue climb-in-hold to 8400.

AFIS <b>134.95</b>	ANCHORAGE CENTER <b>118.8</b>	ILIAMNA RADIO <b>123.6 (CTAF)</b> <b>📻</b>
-----------------------	----------------------------------	---



ELEV 192	TDZE 179
REIL Rwy 26 and 36 <b>📻</b>	
MIRL Rwy 8-26 and 18-36 <b>📻</b>	



CATEGORY	A	B	C	D
LPV DA		429-1	250 (300-1)	
LNAV/VNAV DA		462-1	283 (300-1)	
LNAV MDA		540-1	361 (400-1)	
<b>📻</b> CIRCLING	740-1	548 (600-1)	820-1 <sup>3</sup> / <sub>4</sub> 628 (700-1 <sup>3</sup> / <sub>4</sub> )	1700-3 1508 (1600-3)

AK, 31 OCT 2024 to 26 DEC 2024

AK, 31 OCT 2024 to 26 DEC 2024