

WAAS CH 50539 W22A	APP CRS 221°	Rwy Idg TDZE 447 Apt Elev 447	5000
--	------------------------	---	-------------

RNAV (GPS) RWY 22

FORT YUKON (FYU) (PFYU)

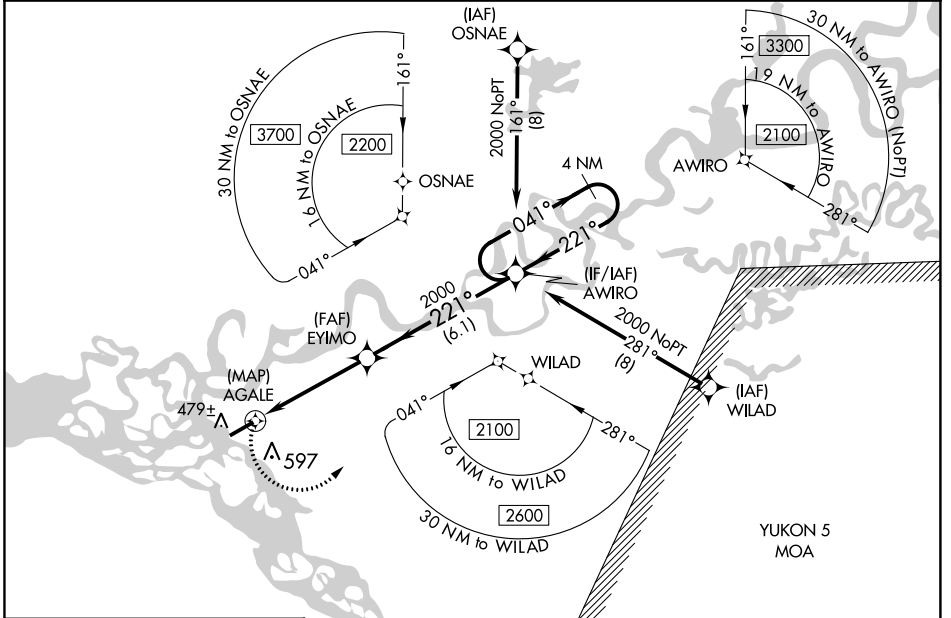
▼ Inop table does not apply to LPV or LNAV/VNAV all Cats. For uncompensated Baro-VNAV systems, LNAV/VNAV NA below -20°C (-4°F) or above 54°C (130°F). Circling NA southeast of Rwy 4 and 22. DME/DME RNP-0.3 NA. Rwy 22 helicopter visibility reduction below 3/4 SM NA. For inop ALS, increase LNAV Cat C and D visibility 1/8 SM

MALSF

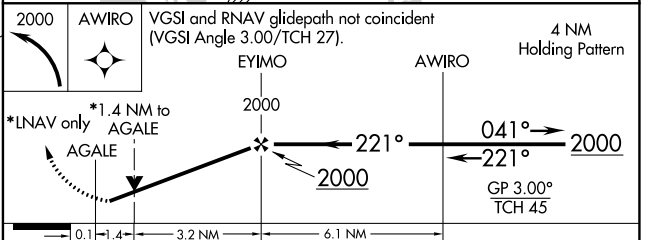
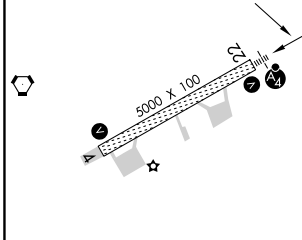


MISSED APPROACH:
Climbing left turn to
2000 direct AWIRO
and hold.

AWOS-3P 125.8	ANCHORAGE CENTER 135.0 225.4	FAIRBANKS RADIO 122.05	CTAF 122.5
-------------------------	--	----------------------------------	----------------------



ELEV 447	TDZE 447
-----------------	-----------------



CATEGORY	A	B	C	D
LPV DA		697-1	250 (300-1)	
LNAV/VNAV DA		716-1	269 (300-1)	
LNAV MDA	960-1	513 (600-1)	960-1 1/4	513 (600 1 1/4)
C CIRCLING	960-1	513 (600-1)	960-1 1/2 513 (600-1 1/2)	1000-2 553 (600-2)

AK, 31 OCT 2024 to 26 DEC 2024

AK, 31 OCT 2024 to 26 DEC 2024