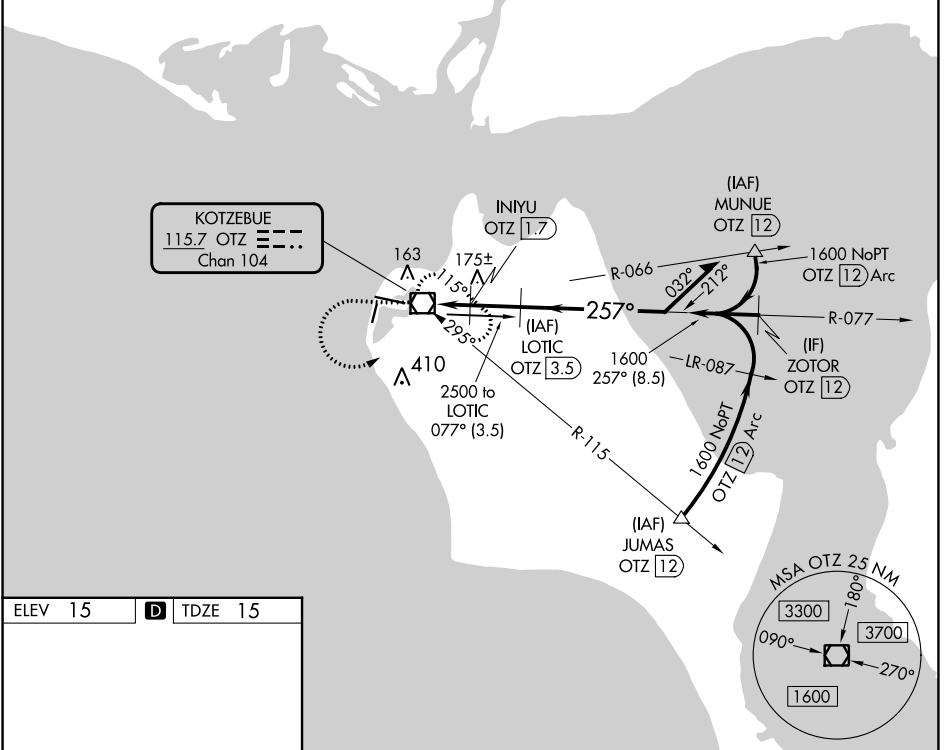


VOR/DME OTZ 115.7 Chan 104	APP CRS 257°	Rwy Idg TDZE Apt Elev	5900 15 15
---	------------------------	-----------------------------	---------------------------------------

VOR RWY 27
RALPH WIEN MEML (OTZ) (PAOT)

DME required.	<p>▽ Circling to Rwy 18, 36 NA at night. Rwy 27 helicopter visibility reduction below 1 SM NA. Straight-in Rwy 27 at night, Circling Rwy 27 at night, operational VGSJ required, remain on or above glidepath until threshold.</p> <p>▲ MISSED APPROACH: Climb to 1600 then climbing left turn to 2000 direct OTZ VOR/DME and hold, continue climb-in-hold to 2000.</p>
---------------	---

AFIS 135.45	ANCHORAGE CENTER 119.2 263.0	KOTZEBUE RADIO 123.6 (CTAF) 0
-----------------------	--	---



AK, 31 OCT 2024 to 26 DEC 2024

AK, 31 OCT 2024 to 26 DEC 2024

ELEV 15	D TDZE 15
---------	------------------

REIL Rwys 9 and 27 **0**
HIRL Rwy 9-27 **0**
MIRL Rwy 18-36 **0**

1600	2000	OTZ		
		LOTIC OTZ (3.5)	Remain within 10 NM	
		INIYU OTZ (1.7)	077°	1600
		OTZ VOR/DME	257°	1600
		920	1600	
		0.7	1.7 NM	1.8 NM
CATEGORY	A	B	C	D
S-27	440-1	425 (500-1)	440-1¼	425 (500-1¼)
0 CIRCLING	520-1	505 (600-1)	720-2	720-2¼
			705 (800-2)	705 (800-2¼)