

24081
CABNN THREE DEPARTURE
(OBSTACLE) (RNAV) (CABNN3•ROGOC)

[USAF]

CAPE NEWENHAM (PAEH)
CAPE NEWENHAM, ALASKA

RNAVI - GPS

ANCHORAGE CENTER
124.2 251.1
CAPE NEWENHAM RADIO
126.2

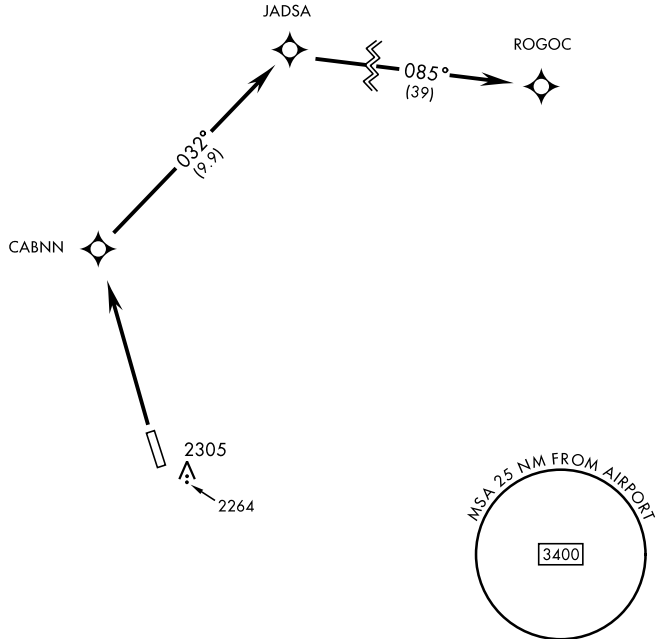
MILITARY CERTIFIED AIRCREWS OR AUTHORIZED CONTRACT AIRCRAFT ONLY

NOT FOR CIVIL USE

Uncontrolled Airspace below 700' AGL
within 7 NM of Cape Newenham airport.

Night operations not authorized.

CAUTION:
High terrain both sides and south
end of runway.



AK, 31 OCT 2024 to 26 DEC 2024

AK, 31 OCT 2024 to 26 DEC 2024



DEPARTURE ROUTE DESCRIPTION

TAKEOFF RWY 15: NA

TAKEOFF RWY 33: Climb to 5000 direct CABNN, then via track 032° to JADSA, then via track 085° to ROGOC, join T223.

CABNN THREE DEPARTURE
(OBSTACLE) (RNAV) (CABNN3•ROGOC)
Orig 21MAR24

CAPE NEWENHAM, ALASKA
CAPE NEWENHAM (PAEH)