

23334

[USAF]

CAPE LISBURNE LRRS (PALU)

# GRAAY FOUR DEPARTURE (RNAV) (GRAAY4• JAPKI)

CAPE LISBURNE, ALASKA

ANCHORAGE CENTER APP/DEP CON  
119.65 363.25  
KOTZEBUE RADIO  
122.3  
CTAF 0  
126.2

RNAV1- GPS

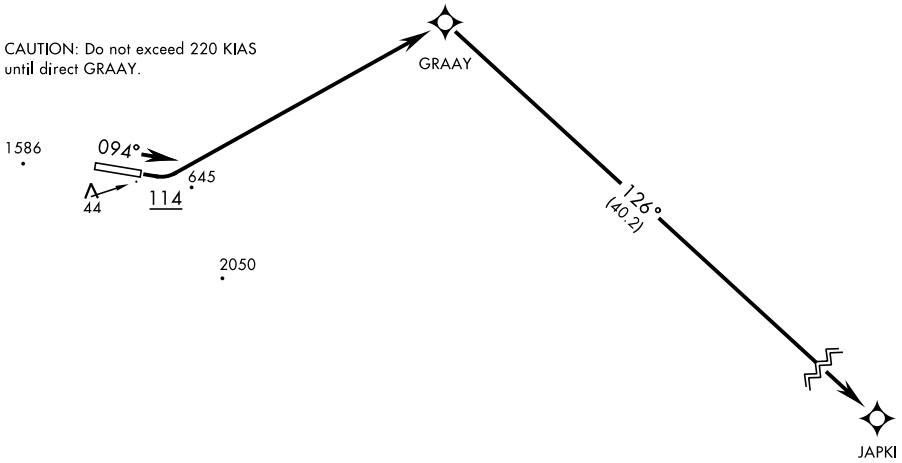
Rwy	Knots	60	120	180	240	300	360
9	V/V(fpm)	362	724	1086	1448	1810	2172

Minimum climb gradient to 600

## NOT FOR CIVIL USE

## FOR USE BY MILITARY CERTIFIED AIRCREWS OR AUTHORIZED CONTRACT AIRCRAFT ONLY

CAUTION: Do not exceed 220 KIAS until direct GRAAY.



WARNING: High terrain within 2 NM of departure end of runway. Prompt compliance with departure instructions is essential to flight safety. Do not delay initial turn at 114°.

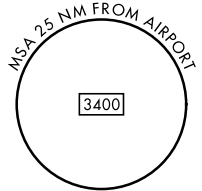
Use of T228 airway requires aircraft to be equipped with TSO-145a/146a capability.

Night operations not authorized.

Procedure NA for CAT E aircraft.

Uncontrolled Airspace below 700' AGL within 7 NM of Cape Lisburne airport.

Takeoff minimums: Rwy 9, standard with minimum climb or 362H/NM to 600'.



AK, 31 OCT 2024 to 26 DEC 2024

AK, 31 OCT 2024 to 26 DEC 2024



### DEPARTURE ROUTE DESCRIPTION

**TAKEOFF RWY 9:** Climb on heading 094° to 114, then climbing left turn direct GRAAY, then track 126° to JAPKI, maintain 8000 or as assigned by ATC.

**TAKEOFF RWY 27:** NOT AUTHORIZED

# GRAAY FOUR DEPARTURE (RNAV) (GRAAY4• JAPKI)

CAPE LISBURNE, ALASKA

Orig 30NOV23

CAPE LISBURNE LRRS (PALU)