

(ROG4.RZC) 24025

ROGERS FOUR DEPARTURE

AL-5002 (FAA)

ROGERS EXEC - CARTER FLD (ROG)

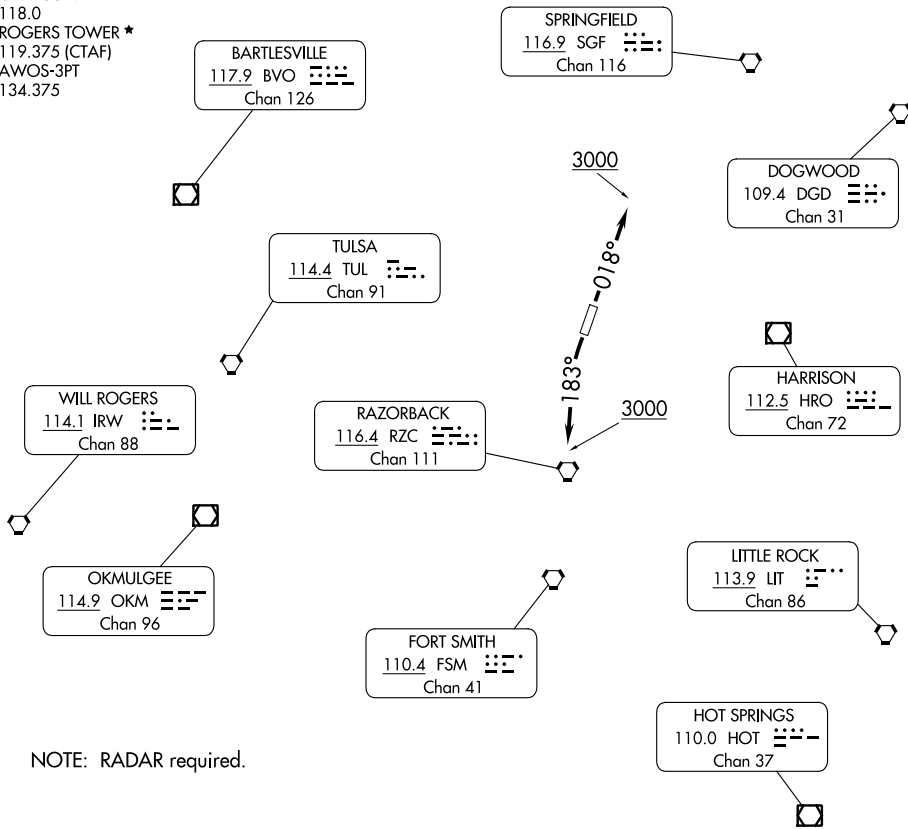
ROGERS, ARKANSAS

RAZORBACK DEP CON ★
 126.6 305.2
 CLNC DEL
 121.75
 CLNC DEL (When twr closed)
 121.75
 GND CON
 118.0
 ROGERS TOWER ★
 119.375 (CTAF)
 AWOS-3PT
 134.375

**TOP ALTITUDE:
3000**

TAKEOFF MINIMUMS

Rwys 2, 20: Standard.



NOTE: RADAR required.

NOTE: Chart not to scale.

DEPARTURE ROUTE DESCRIPTION

TAKEOFF RUNWAY 2: Climb on heading 018° to 3000, thence

TAKEOFF RUNWAY 20: Climbing left turn to 3000 on heading 183°, thence

. . . . expect RADAR vectors to assigned route. Expect clearance to requested altitude ten minutes after departure.

LOST COMMUNICATIONS: If communications are not established within 2 minutes after departure climb and maintain 5000 feet and proceed direct RZC VORTAC, then proceed on course.

ROGERS FOUR DEPARTURE

(ROG4.RZC) 24MAR22

ROGERS, ARKANSAS

ROGERS EXEC - CARTER FLD (ROG)

SC-1, 31 OCT 2024 to 28 NOV 2024

SC-1, 31 OCT 2024 to 28 NOV 2024