

LOC I-RDR 109.9	APCH CRS 357°	Rwy Idg 12,351 TDZE 911 Arprt Elev 911
---------------------------	-------------------------	---

[USAF]

RADAR or DME required.



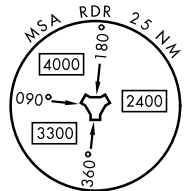
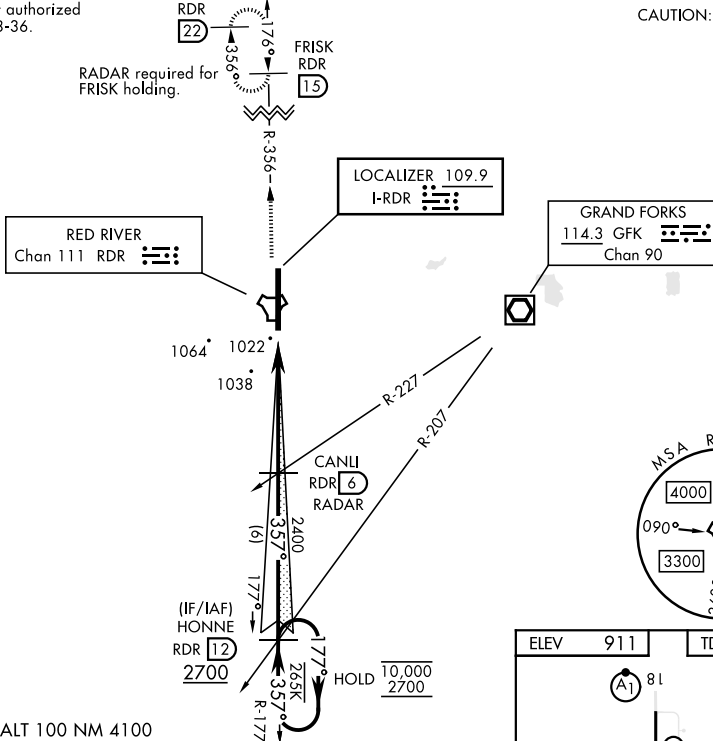
MISSED APPROACH: Climb to 3000 on RDR TACAN R-356 to FRISK and hold.

* When ALS inop, increase RVR to 40 and vis to 3/4 mile.
** When ALS inop, increase CAT AB RVR to 55 and vis to 1 mile, CAT CDE vis to 1 1/2 miles.

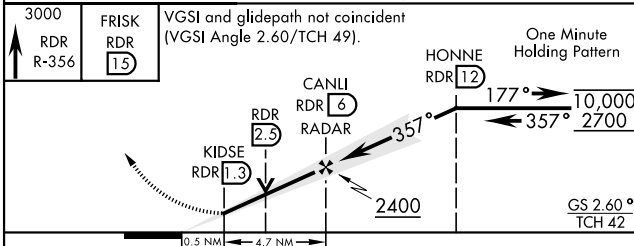
ATIS 273.45	APP CON 118.1 318.1	RED RIVER TOWER 124.9 349.0	GND CON 119.15 275.8	CLNC DEL 119.15 360.7
-----------------------	-------------------------------	---------------------------------------	--------------------------------	---------------------------------

*** Circling not authorized E of Rwy 18-36.

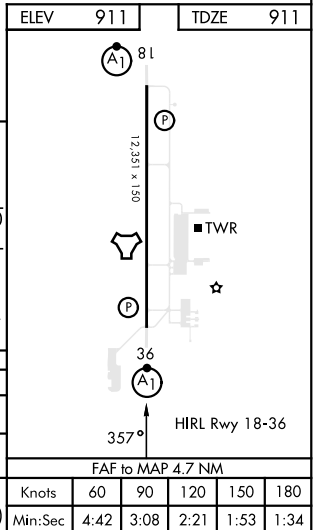
CAUTION: Low TCH 42



EMERG SAFE ALT 100 NM 4100



CATEGORY	A	B	C	D	E
S-ILS 36 *	1111/24		200	(200-1/2)	
S-LOC 36 **	1440/24	529 (600-1/2)	1440/55	529	(600-1)
CIRCLING ***	1440-1	529 (600-1)	1440-1 1/2 529 (600-1/2)	1540-2 629 (700-2)	1560-2 1/4 649 (700-2 1/4)



NC-1, 31 OCT 2024 to 28 NOV 2024

NC-1, 31 OCT 2024 to 28 NOV 2024