

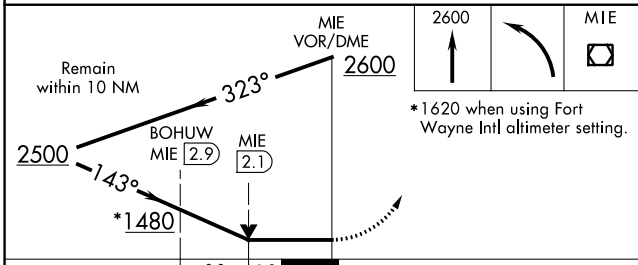
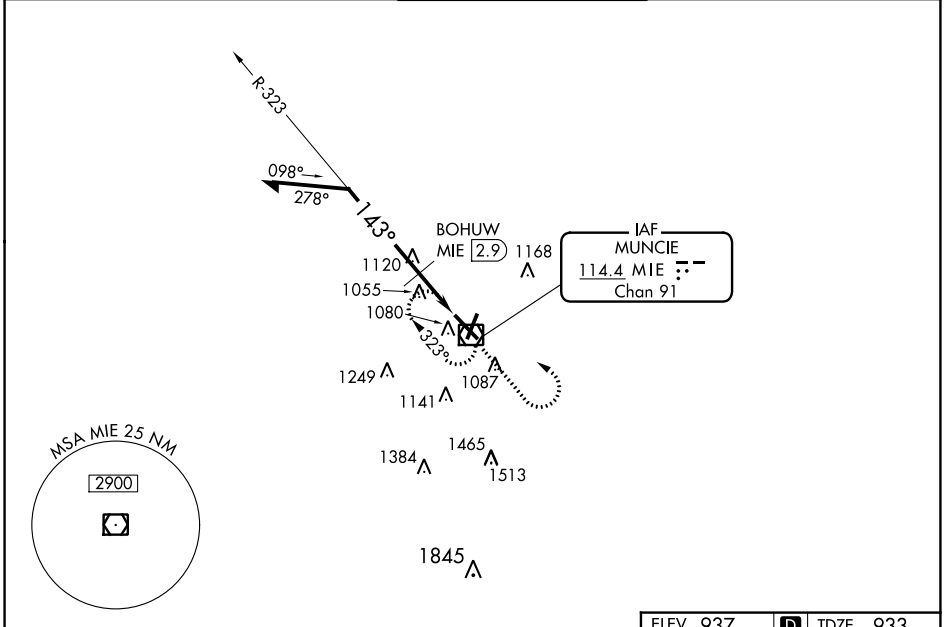
VOR/DME MIE 114.4 Chan 91	APP CRS 143°	Rwy Idg 6500 TDZE 933 Apt Elev 937
---	------------------------	---

VOR RWY 14
DELAWARE COUNTY RGNL (MIE)

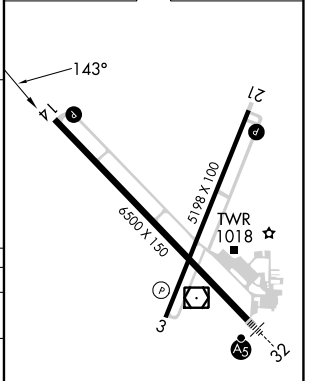
⚠ When local altimeter setting not received, use Fort Wayne Intl altimeter setting and increase all MDAs 140 feet; increase S-14 Cat C visibility ½ SM, Cat D ¼ SM; increase Circling Cat C/D visibility ½ SM. BOHUW fix minimums: increase S-14 Cat C visibility ½ SM, Cat D ¼ SM and Circling Cat C/D visibility ½ SM. VDP NA with Fort Wayne altimeter setting.

⚠ MISSED APPROACH: Climb to 2600 then left turn direct MIE VOR/DME and hold.

ATIS 133.25	INDIANAPOLIS APP CON 120.65 317.8	MUNCIE TOWER ★ 120.1 (CTAF) 0	GND CON 121.9	UNICOM 122.95
-----------------------	---	---	-------------------------	-------------------------



ELEV 937	D TDZE 933
----------	-------------------



CATEGORY	A	B	C	D
S-14	1480-1 547 (600-1)		1480-1½ 547 (600-1½)	1480-1¾ 547 (600-1¾)
C CIRCLING	1480-1 543 (600-1)		1480-1½ 543 (600-1½)	1560-2 623 (700-2)
BOHUW FIX MINIMUMS				
S-14	1380-1 447 (500-1)		1380-1¼ 447 (500-1¼)	1380-1½ 447 (500-1½)
C CIRCLING	1460-1 523 (600-1)		1480-1½ 543 (600-1½)	1560-2 623 (700-2)

HIRL Rwy 14-32 **0**
MIRL Rwy 3-21 **0**
REIL Rws 3, 14 and 21 **0**

EC-2, 31 OCT 2024 to 28 NOV 2024

EC-2, 31 OCT 2024 to 28 NOV 2024