


| | | | |
|--------------|-------------|----------|-------------|
| LOC I-HUM | APP CRS | Rwy Idg | 6509 |
| 108.5 | 179° | TDZE | 8 |
| | | Apt Elev | 9 |

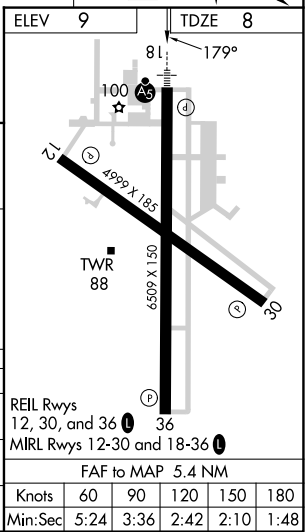
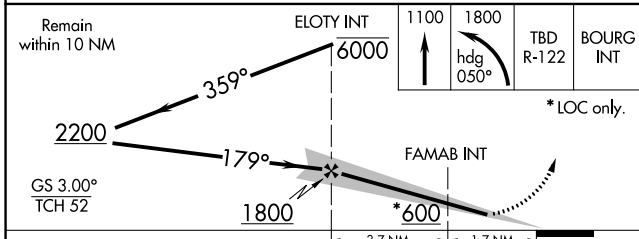
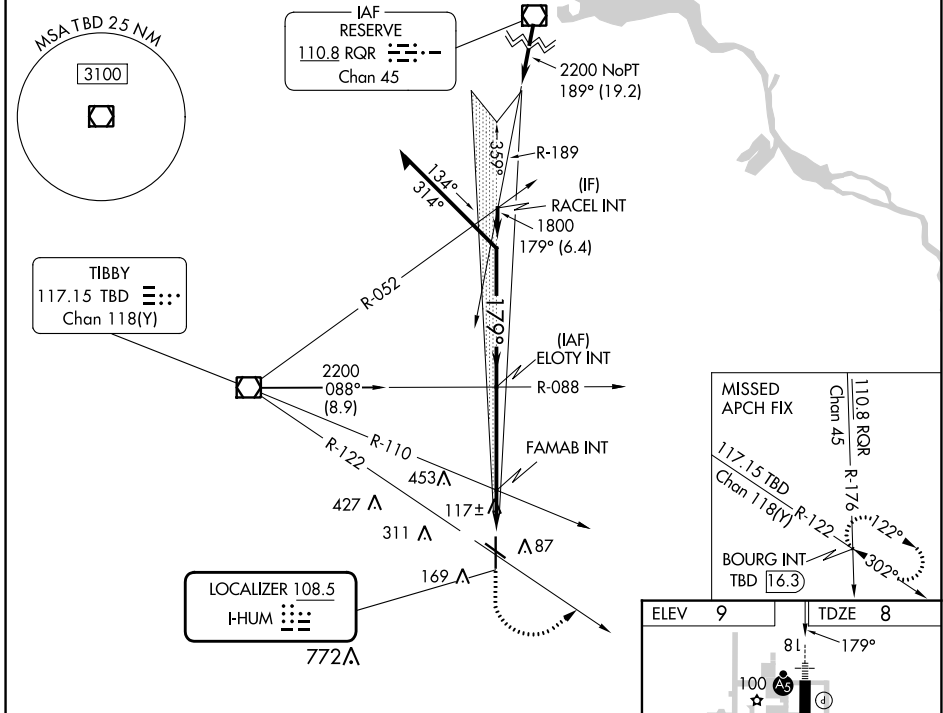
ILS or LOC RWY 18

HOUMA-TERREBONNE (HUM)

⚠ When local altimeter setting not received, use Louis Armstrong New Orleans Intl altimeter setting: increase DA to 285 feet; increase all MDA 80 feet and S-LOC 18 Cat C/D visibility ¼ SM and Circling Cat C/D visibility ¼ SM. For inop ALS increase S-LOC 18 Cat C/D visibility to 1 SM. For inop ALS when using Louis Armstrong New Orleans Intl altimeter setting increase S-ILS 18 all Cats visibility ⅓ SM.

MALSR

MISSED APPROACH: Climb to 1100 then climbing left turn to 1800 on heading 050° and TBD VOR/DME R-122 to BOURG INT/TBD 16.3 DME and hold.

| | | | | | |
|-----------------------|--|--|---------------------------|---|-------------------------|
| ATIS 120.25 | NEW ORLEANS APP CON 118.9 350.35 | HOUMA TOWER ★ 125.3 (CTAF) 0 346.3 | GND CON 123.875 | CLNC DEL 118.9 (When twr closed) | UNICOM 122.95 |
|-----------------------|--|--|---------------------------|---|-------------------------|



| CATEGORY | A | B | C | D |
|-------------------|-------------------|-------------|------------------------|------------------------|
| S-ILS 18 | 208-½ 200 (200-½) | | | |
| S-LOC 18 | 380-½ | 372 (400-½) | 380-⅝ | 372 (400-⅝) |
| C CIRCLING | 480-1 | 471 (500-1) | 760-2¼ 751 (800-2¼) | 760-2½ 751 (800-2½) |

SC-4, 31 OCT 2024 to 28 NOV 2024

SC-4, 31 OCT 2024 to 28 NOV 2024