

WAAS CH 56413 W36A	APP CRS 359°	Rwy Idg 6509 TDZE 8 Apt Elev 9
--	------------------------	---

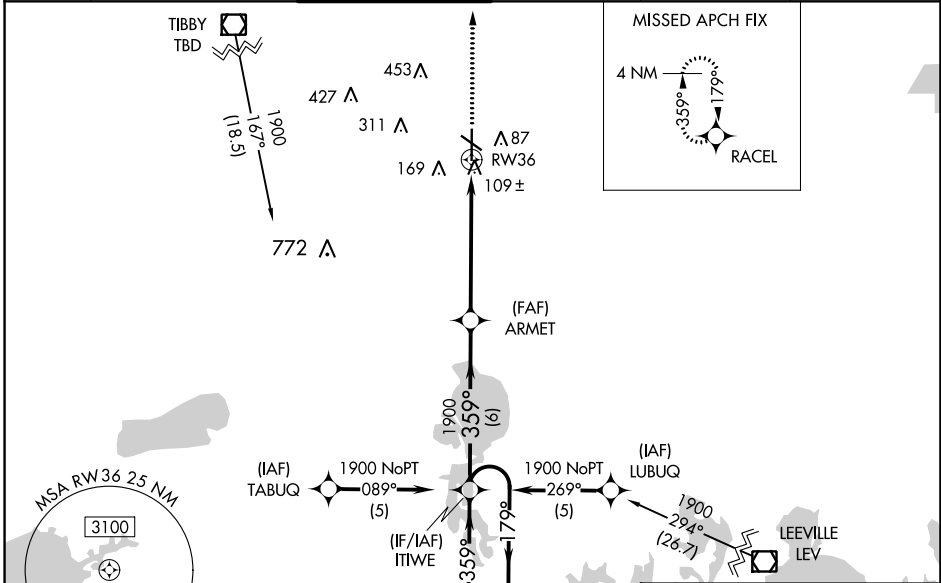
RNAV (GPS) RWY 36

HOUMA-TERREBONNE (HUM)

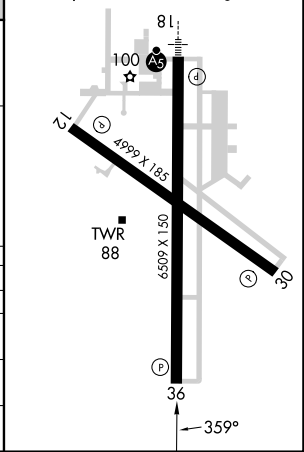
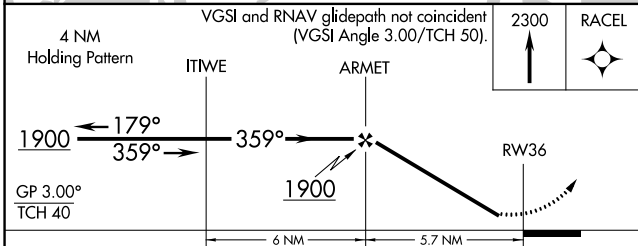
⚠ Baro-VNAV NA when using Louis Armstrong New Orleans Intl altimeter setting.
⚠ For uncompensated Baro-VNAV systems, LNAV/VNAV NA below -15°C (5°F) or above 49°C (120°F). DME/DME RNP-0.3 NA. Visibility reduction by helicopters NA. When local altimeter setting not received, use Louis Armstrong New Orleans Intl altimeter setting: increase LPV DA to 408, LNAV/VNAV DA to 518, and all visibilities 1/8 SM; increase all MDAs 80 feet and visibility Cats C and D 1/4 SM.

MISSED APPROACH: Climb to 2300 direct RACEL and hold.

ATIS 120.25	NEW ORLEANS APP CON 118.9 350.35	HOUMA TOWER ★ 125.3 (CTAF) 346.3	GND CON 123.875	CLNC DEL 118.9 (When twr closed)	UNICOM 122.95
-----------------------	--	--	---------------------------	---	-------------------------



ELEV 9	TDZE 8
REIL Rwy 12, 30 and 36 1	
MIRL Rwy 12-30 and 18-36 1	



CATEGORY	A	B	C	D
LPV DA	331-1		323 (400-1)	
LNAV/VNAV DA	441-1 1/4		433 (500-1 1/4)	
LNAV MDA	460-1	452 (500-1)	460-1 3/8	452 (500-1 3/8)
C CIRCLING	480-1	471 (500-1)	760-2 1/4 751 (800-2 1/4)	760-2 1/2 751 (800-2 1/2)

SC-4, 31 OCT 2024 to 28 NOV 2024

SC-4, 31 OCT 2024 to 28 NOV 2024