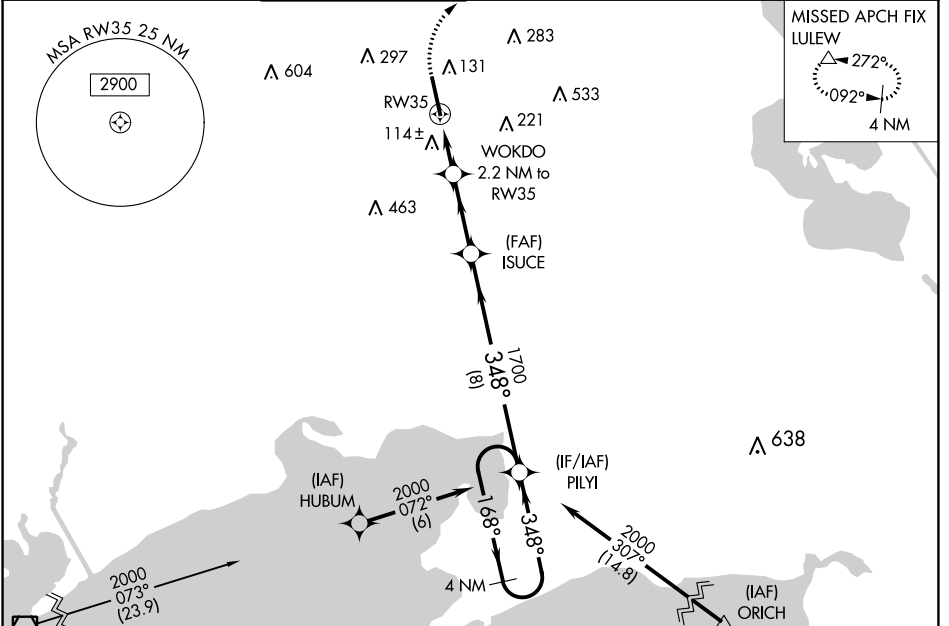


| | | |
|--|------------------------|---|
| WAAS CH 40301 W35A | APP CRS 348° | Rwy Idg 8002 TDZE 21 Apt Elev 24 |
|--|------------------------|---|

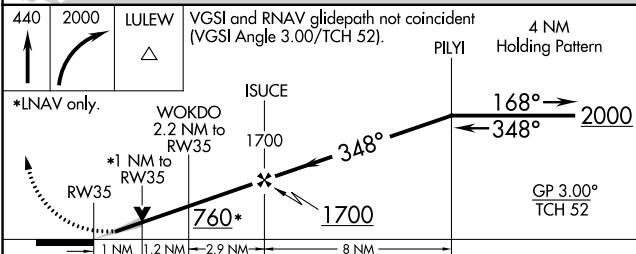
RNAV (GPS) RWY 35

ACADIANA RGNL (A.R.A)

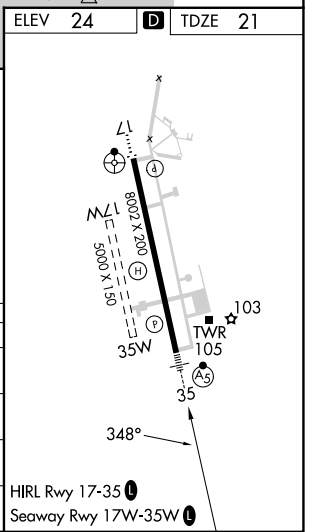
| | | | | | | | |
|--|--|--|-------------------------|--------------------------|---|-------------------------|--------------|
| RNP APCH. | | | | MALSR | MISSED APPROACH: Climb to 440 then climbing right turn to 2000 direct LULEW and hold. | | |
| ▼ For uncompensated Baro-VNAV systems, LNAV/VNAV NA below -3°C or above 54°C. For inop ALS, increase LNAV/VNAV all Cats visibility to ½ SM and LNAV Cats C/D visibility to 1 SM. Circling NA to Rwy 17W and 35W. | | | | | | | |
| ASOS 133.325 | LAFAYETTE APP CON* 121.1 268.7 | ACADIANA TOWER* 125.0 (CTAF) 239.3 | GND CON 121.7 | CLNC DEL 121.7 | CLNC DEL 118.05 (when twr closed) | UNICOM 122.95 | 122.7 |



| | |
|---------|---------|
| ELEV 24 | TDZE 21 |
|---------|---------|



| CATEGORY | A | B | C | D |
|----------|----------------------|----------------------|-----------------------|----------------------|
| LPV DA | | 221-½ | 200 (200-½) | |
| LNAV/DA | | 303-½ | 282 (300-½) | |
| LNAV MDA | 380-½ | 359 (400-½) | 380-¾ | 359 (400-¾) |
| CIRCLING | 440-1 416 (500-1) | 480-1 456 (500-1) | 600-1½ 576 (600-½) | 680-2 656 (700-2) |



SC-4, 31 OCT 2024 to 28 NOV 2024

SC-4, 31 OCT 2024 to 28 NOV 2024