

WAAS CH 57923 W23A	APP CRS 235°	Rwy Idg TDZE Apt Elev	3504 1224 1224
--	------------------------	-----------------------------	---

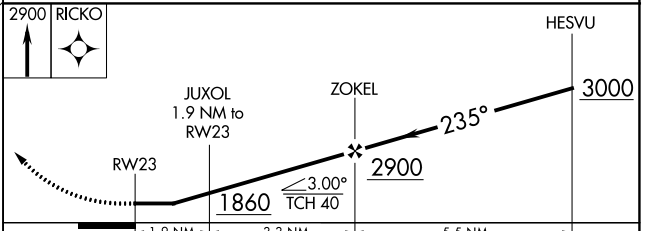
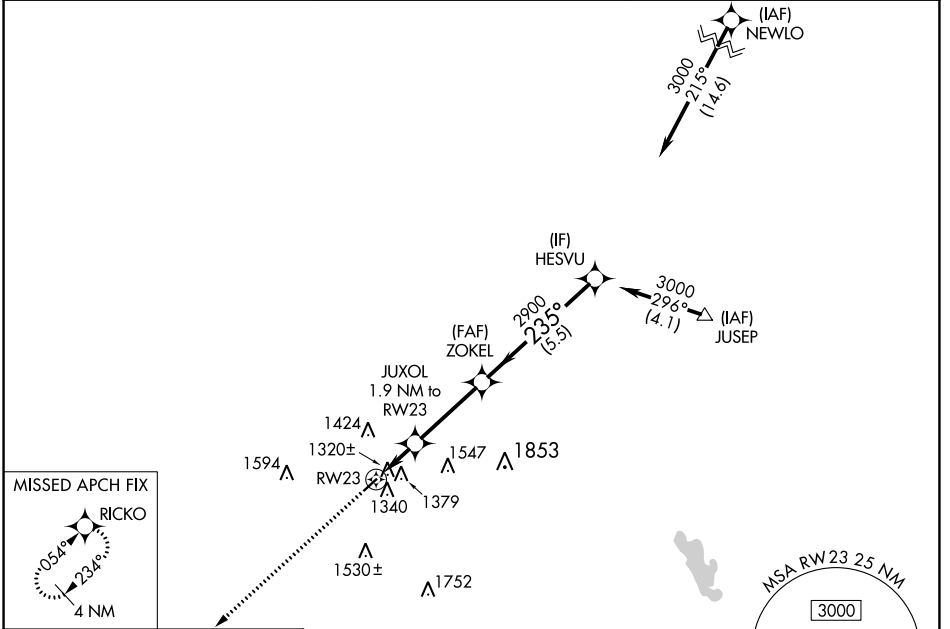
RNAV (GPS) RWY 23

GALLION MUNI (GQQ)

NA Helicopter visibility reduction below 3/4 SM NA. DME/DME RNP-0.3 NA. Use Mansfield altimeter setting. Circling Rwy 5 NA at night.

MISSED APPROACH: Climb to 2900 direct RICKO and hold.

CLEVELAND APP CON ★ 128.35 360.65	CLNC DEL 126.8	UNICOM 122.8 (CTAF)
---	--------------------------	-------------------------------



CATEGORY	A	B	C	D
LP MDA	1620-1	396 (400-1)	1620-1 1/8 396 (400-1 1/8)	NA
LNAV MDA	1760-1	536 (600-1)	1760-1 1/8 536 (600-1 1/8)	NA
CIRCLING	1800-1 576 (600-1)	1960-1 736 (800-1)	1960-2 736 (800-2)	NA

MIRL Rwy 5-23
REIL Rws 5 and 23

EC-2, 31 OCT 2024 to 28 NOV 2024

EC-2, 31 OCT 2024 to 28 NOV 2024