

VORTAC MFD <b>108.8</b> Chan <b>25</b>	APP CRS <b>224°</b>	Rwy Idg TDZE Apt Elev <b>3504</b> <b>1224</b> <b>1224</b>
--	------------------------	--

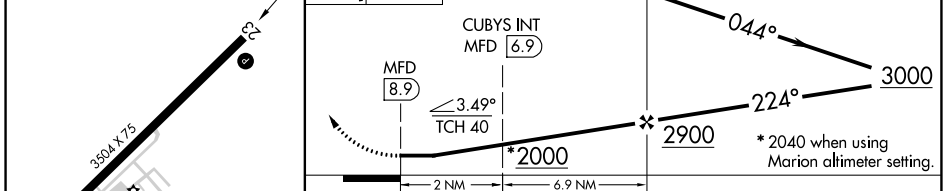
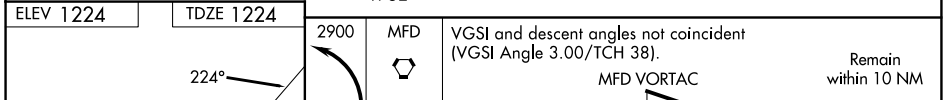
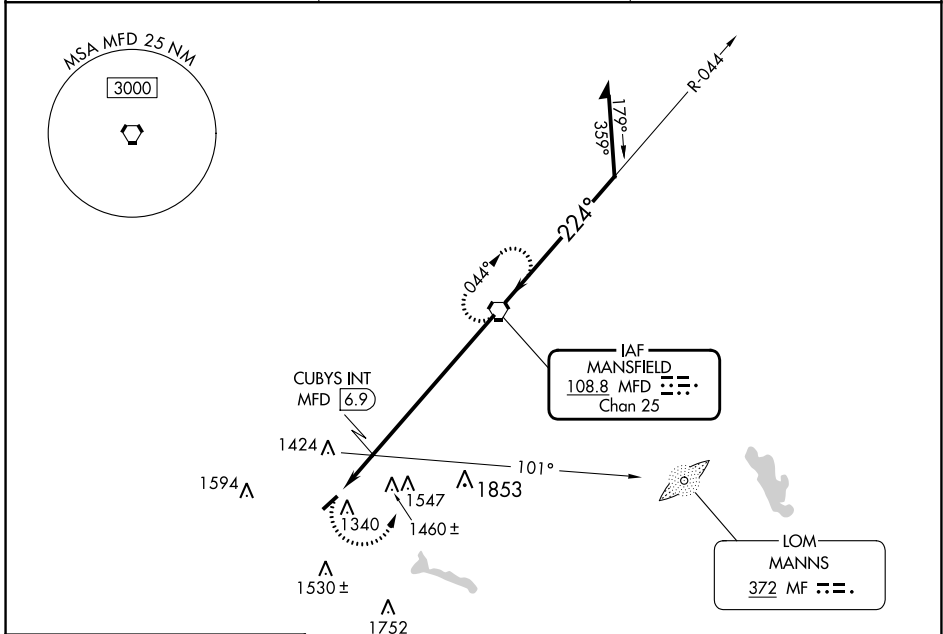
**VOR RWY 23**  
GALLION MUNI (GQQ)

RADAR required for procedure entry.

Procedure NA at night. Use Mansfield altimeter setting; when not received, use Marion altimeter setting and increase all MDAs 40 feet, increase CUBYS fix minimums S-23 all Cats visibility 1/8 SM and Circling Cat C 1/4 SM. Rwy 23 helicopter visibility reduction below 1 SM NA.

MISSED APPROACH: Climbing left turn to 2900 direct MFD VORTAC and hold.

CLEVELAND APP CON * <b>128.35 360.65</b>	CLNC DEL <b>126.8</b>	UNICOM <b>122.8</b> (CTAF) <b>0</b>
---	--------------------------	--



CATEGORY	A	B	C	D
S-23	2000-1 776 (800-1)	2000-1 1/4 776 (800-1 1/4)	2000-2 1/2 776 (800-2 1/2)	NA
CIRCLING	2000-1 776 (800-1)	2000-1 1/4 776 (800-1 1/4)	2000-2 1/2 776 (800-2 1/2)	NA

CUBYS FIX MINIMUMS				
S-23	1760-1	536 (600-1)	1760-1 5/8 536 (600-1 5/8)	NA
CIRCLING	1800-1 576 (600-1)	1960-1 736 (800-1)	1960-2 736 (800-2)	NA

REIL Rwys 5 and 23 **0**  
MIRL Rwy 5-23 **0**

FAF to MAP 8.9 NM

Knots	60	90	120	150	180
Min:Sec	8:54	5:56	4:27	3:34	2:58

EC-2, 31 OCT 2024 to 28 NOV 2024

EC-2, 31 OCT 2024 to 28 NOV 2024