

GIBBZ FIVE ARRIVAL (RNAV) Arrival Routes

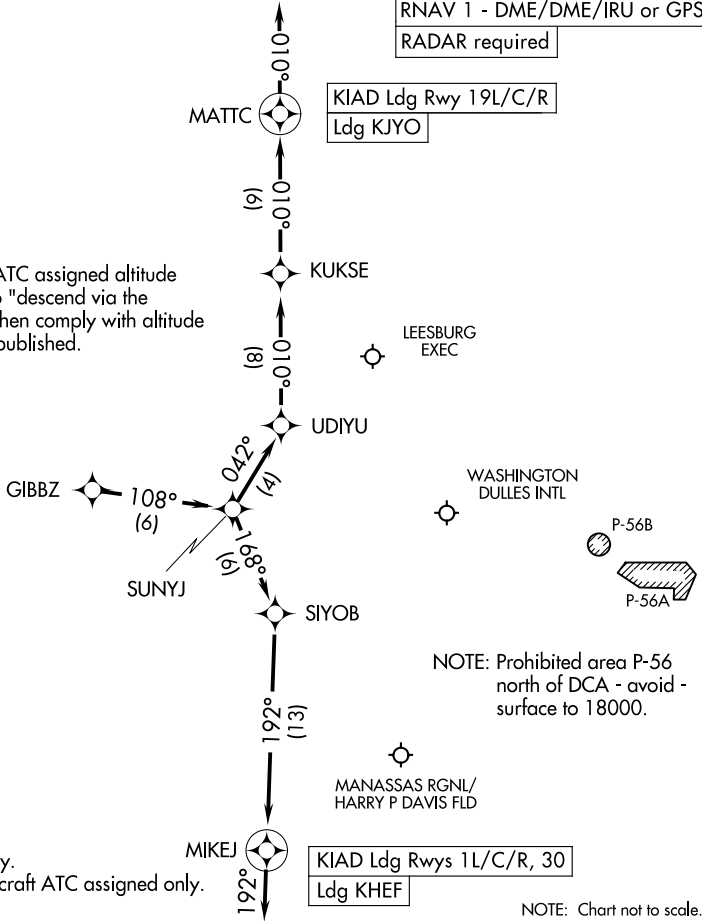
WASHINGTON, DC

POTOMAC APP CON
120.45 306.925
HEF ATIS
125.175
IAD D-ATIS
134.85

RNAV 1 - DME/DME/IRU or GPS
RADAR required

KIAD Ldg Rwy 19L/C/R
Ldg KJYO

NOTE: Maintain last ATC assigned altitude until cleared to "descend via the GIBBZ FIVE", then comply with altitude restrictions as published.



NOTE: Jet aircraft only.
NOTE: Turboprop aircraft ATC assigned only.

NOTE: Chart not to scale.

ARRIVAL ROUTE DESCRIPTION

LANDING KIAD RUNWAYS 1L/C/R, 30: From GIBBZ on track 108° to SUNYJ, then on track 168° to SIYOB, then on track 192° to MIKEJ, then on track 192°. Expect RADAR vectors to final approach course.

LANDING KIAD RUNWAYS 19L/C/R: From GIBBZ on track 108° to SUNYJ, then on track 042° to UDIYU, then on track 010° to KUKSE, then on track 010° to MATTC, then on track 010°. Expect RADAR vectors to final approach course.

LANDING KHEF: From GIBBZ on track 108° to SUNYJ, then on track 168° to SIYOB, then on track 192° to MIKEJ, then on track 192°. Expect RADAR vectors to final approach course.

LANDING KJYO: From GIBBZ on track 108° to SUNYJ, then on track 042° to UDIYU, then on track 010° to KUKSE, then on track 010° to MATTC, then on track 010°. Expect RADAR vectors to final approach course.