

LOC I-DLX 111.3	APP CRS 191°	Rwy Idg 11089 TDZE 272 Apt Elev 312
---------------------------	------------------------	--

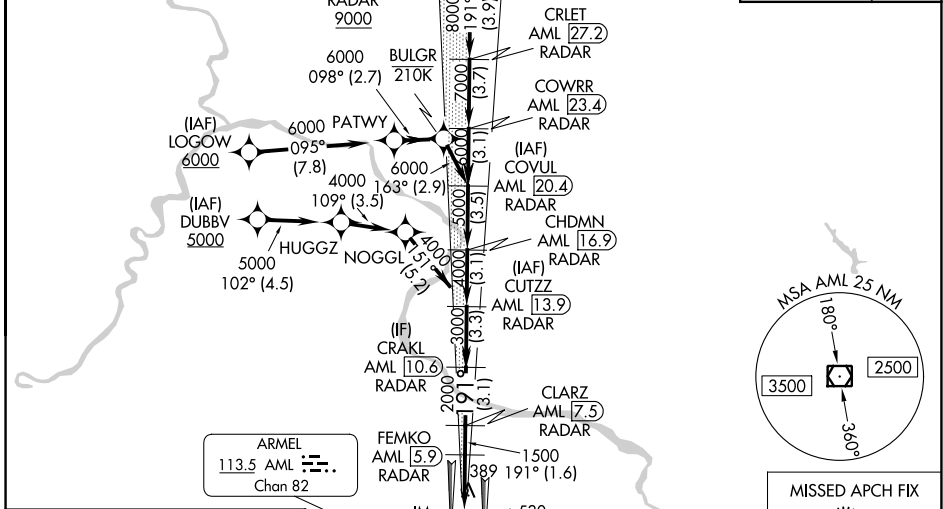
ILS RWY 19C (CAT II & III)

WASHINGTON DULLES INTL (IAD)

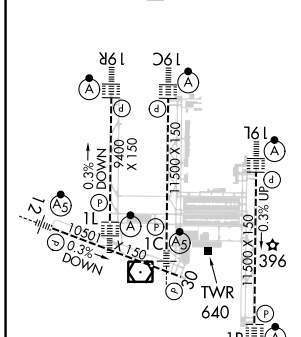
RNP APCH - GPS. RADAR required for procedure entry at NOOXX. DME or RADAR required.	ALSF-2 	MISSED APPROACH: Climb to 3000 direct MOOOV and hold.
Simultaneous approach authorized. DME from AML VOR/DME. DME use requires simultaneous reception of I-DLX and AML DME.		

D-ATIS 134.85	POTOMAC APP CON 120.45 306.925 (241°-330°) 128.525 306.925 (091°-240°) 126.1 338.25 (331°-090°)	DULLES TOWER 120.1 317.8 (Rwy 1R/19L) 120.25 348.6 (Rwy 1C/19C) 134.425 348.6 (Rwys 1L/19R and 12/30)	GND CON 121.9 317.8 (EAST) 121.625 348.6 (WEST)
-------------------------	---	---	---

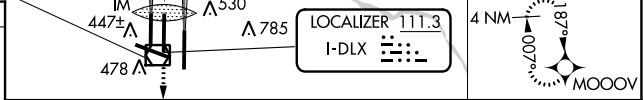
		CLNC DEL 135.7 317.8	CPDLC
--	--	--------------------------------	-------



ELEV 312	D	TDZE 272
----------	----------	----------



REIL Rwy 30 HIRL all Rwys TDZ/CL Rwys 1C, 1L, 1R, 12, 19C and 19R
--



3000	MOOOV	VGSI and ILS glidepath not coincident (VGSI Angle 3.00/TCH 72).								NOOXX AML 31.1 RADAR	
		FEMKO AML 5.9 RADAR	CLARZ AML 7.5 RADAR	CRALZ AML 10.6 RADAR	CUTZZ AML 13.9 RADAR	CHDMN AML 16.9 RADAR	COVUL AML 20.4 RADAR	COWRR AML 23.4 RADAR	CRLET AML 27.2 RADAR	NOOXX AML 31.1 RADAR	
		IM 1500	1500	2000	3000	4000	5000	6000	7000	8000	
		1030	3.7 NM	1.6 NM	3.1 NM	3.3 NM	3.1 NM	3.5 NM	3.1 NM	3.7 NM	3.9 NM

CATEGORY	A	B	C	D
S-ILS 19C	CAT II RA 110/12 100 DA 372			
S-ILS 19C	CAT IIIa RVR 07			
S-ILS 19C	CAT IIIb RVR 06			
S-ILS 19C	CAT IIIc NA			

CATEGORY II & III ILS - SPECIAL AIRCREW & AIRCRAFT CERTIFICATION REQUIRED