

APP CRS	Rwy Idg	<b>9400</b>
<b>011°</b>	TDZE	<b>296</b>
	Apt Elev	<b>312</b>

# RNAV (RNP) Z RWY 1L

WASHINGTON DULLES INTL (IAD)

RNP AR APCH - GPS.

▼ For uncompensated Baro-VNAV systems, procedure NA below -13°C or above 54°C. Simultaneous approach authorized. For inop ALS, increase RNP 0.11 all Cats visibility to RVR 4500 and RNP 0.30 all Cats visibility to RVR 6000.

ALSF-2

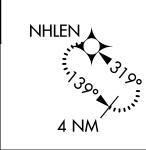


MISSED APPROACH: Climb to 800 then climbing left turn to 3000 direct NHLEN and hold.

POTOMAC APP CON <b>120.45 306.925</b> (241°-330°) <b>128.525 306.925</b> (091°-240°) <b>126.1 338.25</b> (331°-090°)	DULLES TOWER <b>120.1 317.8</b> (Rwy 1R/19L) <b>120.25 348.6</b> (Rwy 1C/19C) <b>134.425 348.6</b> (Rwys 1L/19R and 12/30)	GND CON <b>121.9 317.8</b> (EAST) <b>121.625 348.6</b> (WEST)	CLNC DEL <b>135.7 317.8</b>
---	---	---	--------------------------------

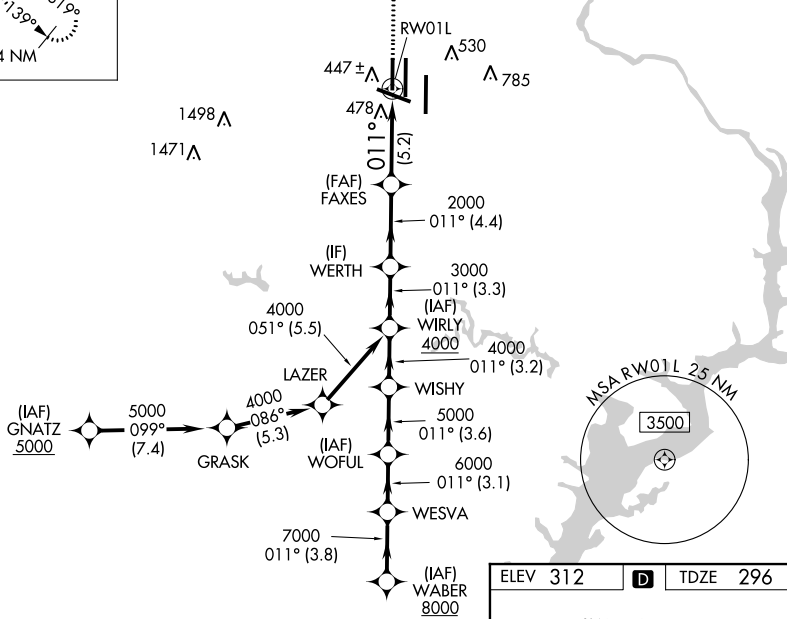
D-ATIS  
**134.85**

MISSED APCH FIX



CPDLC

▲  
2346



NE-3, 31 OCT 2024 to 28 NOV 2024

NE-3, 31 OCT 2024 to 28 NOV 2024

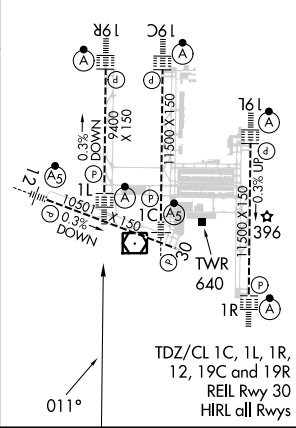
VGSI and RNAV glidepath not coincident (VGSI Angle 3.00/TCH 70).

WABER	WESVA	WOFUL	WISHY	WIRLY	WERTH	FAXES	RWY01L
8000	7000	6000	5000	4000	3000	2000	
GP 3.00°							
TCH 55							

CATEGORY	A	B	C	D
RNP 0.11 DA		572/24	276 (300-½)	
RNP 0.30 DA		710/40	414 (400-¾)	

## AUTHORIZATION REQUIRED

ELEV 312 **D** TDZE 296



TDZ/CL 1C, 1L, 1R,  
12, 19C and 19R  
REIL Rwy 30  
HIRL all Rwys