

WAAS CH <b>86709</b> <b>W19D</b>	APP CRS <b>191°</b>	Rwy Idg TDZE Apt Elev	<b>9400</b> <b>278</b> <b>312</b>
--	------------------------	-----------------------------	---

# RNAV (GPS) Y RWY 19R

WASHINGTON DULLES INTL (IAD)

RNP APCH - GPS.

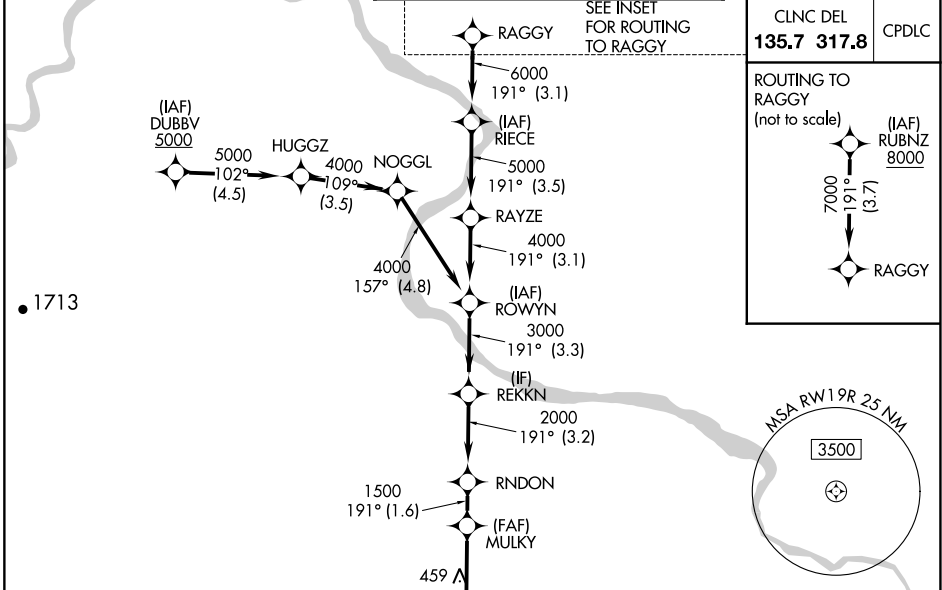
For uncompensated Baro-VNAV systems, LNAV/VNAV NA below -13°C or above 54°C. Simultaneous approach authorized. LNAV procedure NA during simultaneous operations. Use of FD or AP required during simultaneous operations.

ALSf-2



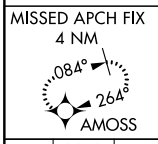
MISSED APPROACH: Climb to 800 then climbing right turn to 3000 direct AMOSS and hold.

D-ATIS <b>134.85</b>	POTOMAC APP CON <b>120.45 306.925</b> (241°-330°) <b>128.525 306.925</b> (091°-240°) <b>126.1 338.25</b> (331°-090°)	DULLES TOWER <b>120.1 317.8</b> (Rwy 1R/19L) <b>120.25 348.6</b> (Rwy 1C/19C) <b>134.425 348.6</b> (Rwy 1L/19R and 12/30)	GND CON <b>121.9 317.8</b> (EAST) <b>121.625 348.6</b> (WEST)
-------------------------	---	--	---



NE-3, 31 OCT 2024 to 28 NOV 2024

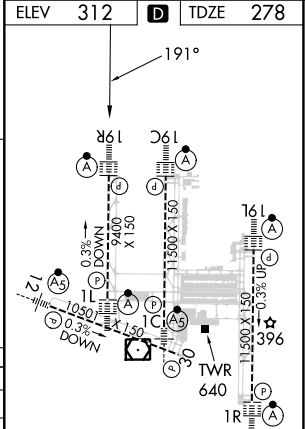
NE-3, 31 OCT 2024 to 28 NOV 2024



800 3000 AMOSS  
 VGSi and RNAV glidepath not coincident (VGSi Angle 3.00°/TCH 70°).  
 RUBNZ 8000  
 RAGGY 8000  
 RAYZE 5000  
 RIECE 6000  
 ROWYN 4000  
 RNDON 2000  
 MULKY 1500  
 GP 3.00° TCH 55

	MULKY	RNDON	REKKN	ROWYN	RAYZE	RIECE	RUBNZ
	1.2 NM to RWY 19R	1.500	2000	3000	4000	5000	8000
	1.2	2.5	1.6 NM	3.2 NM	3.3 NM	3.1 NM	3.5 NM
	1.2	2.5	1.6 NM	3.2 NM	3.3 NM	3.1 NM	3.5 NM

CATEGORY	A	B	C	D
LPV DA		478/18	200 (200-1/2)	
LNAV/VNAV DA		708/40	430 (400-3/4)	
LNAV MDA	720/24	442 (500-1/2)	720/45	442 (500-3/4)
CIRCLING	940-1	628 (700-1)	940-1 3/4 628 (700-1 3/4)	1180-2 3/4 868 (900-2 3/4)



TDZ/CL Rwy 1C, 1L, 1R, 12, 19C and 19R  
 REIL Rwy 30  
 HIRL all Rwy