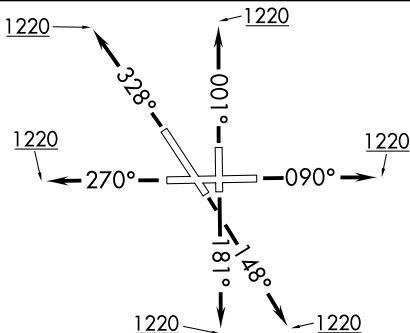
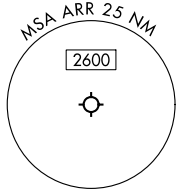


ELANR SEVEN DEPARTURE (RNAV)



**TOP ALTITUDE:
3000**

CHICAGO DEP CON 133.5 349.0
 ATIS 125.85
 GND CON 121.7
 AURORA TOWER ★ 120.6 (CTAF)

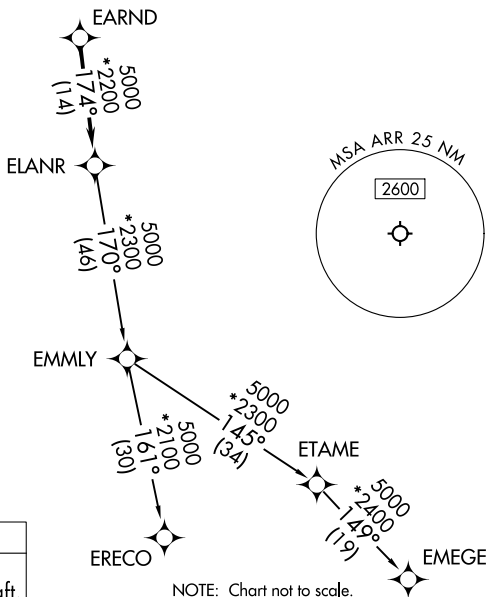


TAKEOFF MINIMUMS:

Rwys 9, 15, 18, 27, 33, 36: Standard.

NOTE: Turbojet departures maintain 250K until advised by ATC.

NOTE: EMMLY Transition: For aircraft inbound to Indianapolis Terminal Area, or as assigned by ATC.



NOTE: Chart not to scale.

RNAV 1 - DME/DME/IRU or GPS.
 RADAR required.
 RADAR required for non-GPS equipped aircraft.

DEPARTURE ROUTE DESCRIPTION

- TAKEOFF RUNWAY 9:** Climb on heading 090° to 1220, then as assigned by ATC, for vectors to EARND, thence. . . .
- TAKEOFF RUNWAY 15:** Climb on heading 148° to 1220, then as assigned by ATC, for vectors to EARND, thence. . . .
- TAKEOFF RUNWAY 18:** Climb on heading 181° to 1220, then as assigned by ATC, for vectors to EARND, thence. . . .
- TAKEOFF RUNWAY 27:** Climb on heading 270° to 1220, then as assigned by ATC, for vectors to EARND, thence. . . .
- TAKEOFF RUNWAY 33:** Climb on heading 328° to 1220, then as assigned by ATC, for vectors to EARND, thence. . . .
- TAKEOFF RUNWAY 36:** Climb on heading 001° to 1220, then as assigned by ATC, for vectors to EARND, thence. . . .

. . . . on track 174° to ELANR, then on (transition), maintain 3000.
Expect filed altitude 10 minutes after departure.

- EMEGE TRANSITION (ELANR7.EMEGE):
- EMMLY TRANSITION (ELANR7.EMMLY):
- ERECO TRANSITION (ELANR7.ERECO):