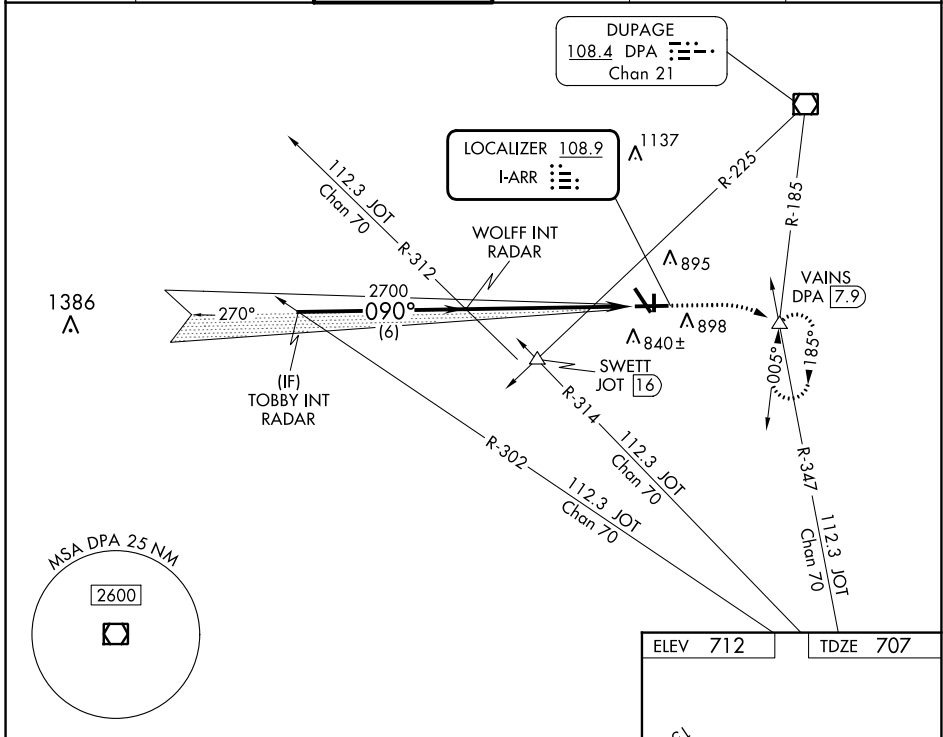


LOC I-ARR 108.9	APP CRS 090°	Rwy Idg TDZE Apt Elev	6501 707 712
---------------------------	------------------------	-----------------------------	---

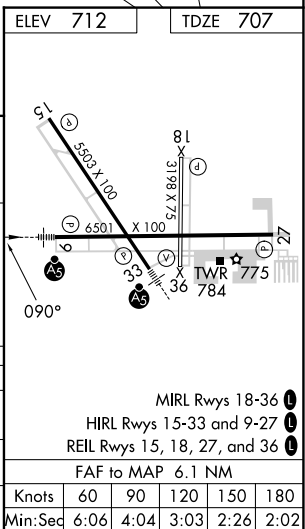
ILS or LOC RWY 9

AURORA MUNI (A.R.R.)

RADAR required for procedure entry.		MALS R	MISSED APPROACH: Climb to 1200 then climbing right turn to 3000 on heading 090° and on DPA VOR/DME R-185 to VAINS INT/DPA 7.9 DME and hold, continue climb-in-hold to 3000.		
▼ For inop ALS, increase S-LOC 9 Cat C/D visibilities to 1½ SM.		AS			
ATIS 125.85	CHICAGO APP CON 133.5 349.0	AURORA TOWER ★ 120.6 (CTAF)	GND CON 121.7	CLNC DEL 121.7 (When tower closed)	UNICOM 122.95 123.5



TOBBY INT RADAR	WOLFF INT RADAR	1200	3000	DPA R-185	VAINS
		↑	hdg 090°		
2700		2700			
GS 3.00° TCH 45		2700			
6 NM		6.1 NM			
CATEGORY	A	B	C	D	
S-ILS 9	907-½ 200 (200-½)				
S-LOC 9	1220-½ 513 (600-½)		1220-1 513 (600-1)		
CIRCLING	1220-1 508 (600-1)		1300-1½ 588 (600-1½)		1320-2 608 (700-2)



EC-3, 31 OCT 2024 to 28 NOV 2024

EC-3, 31 OCT 2024 to 28 NOV 2024