

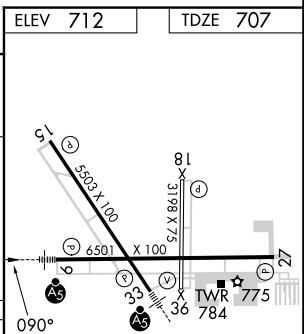
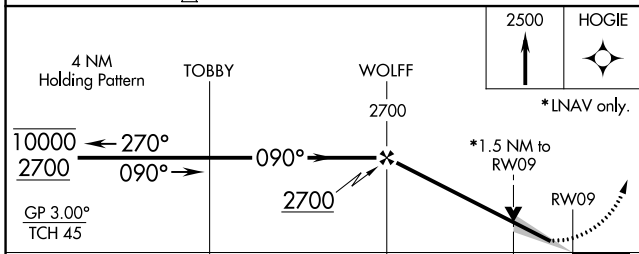
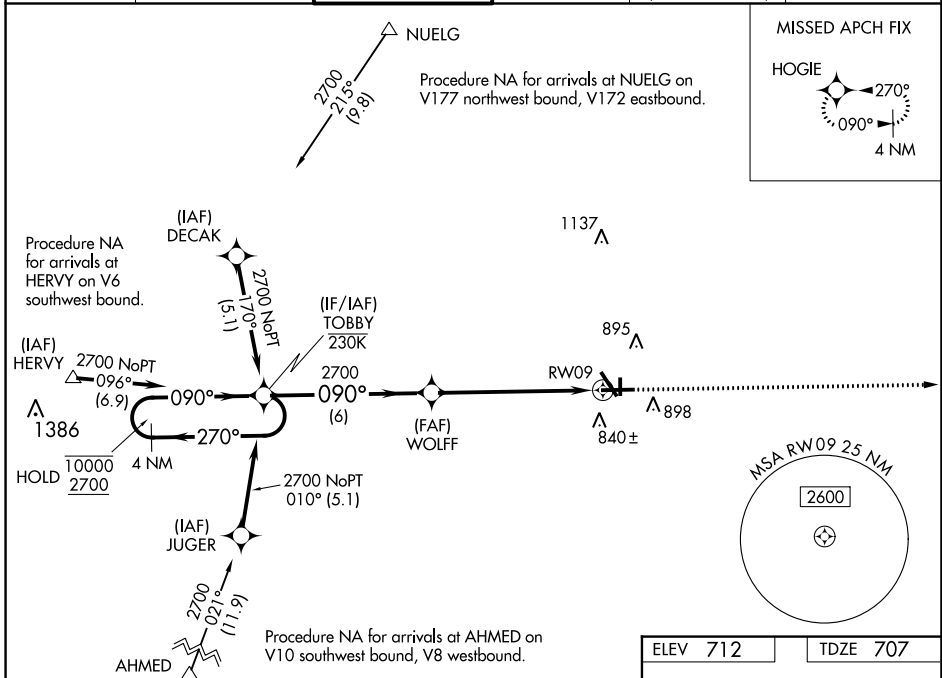
WAAS CH 45522 W09A	APP CRS 090°	Rwy Idg 6501 TDZE 707 Apt Elev 712
--	------------------------	---

RNAV (GPS) RWY 9

AURORA MUNI (A.R.R.)

RNP APCH - GPS.		MALSRL	MISSED APPROACH: Climb to 2500 direct HOGIE and hold.
<p>▼ For uncompensated Baro-VNAV systems, LNAV/VNAV NA below -20°C or above 54°C. For inop APCH, increase LNAV Cat C/D visibility to 1½ SM.</p>			

ATIS 125.85	CHICAGO APP CON 133.5 349.0	AURORA TOWER* 120.6 (CTAF) 0	GND CON 121.7	CLNC DEL 121.7 (When tower closed)	UNICOM 122.95 123.5
-----------------------	---------------------------------------	--	-------------------------	---	-------------------------------



CATEGORY	A	B	C	D
LPV DA	957-½		250 (300-½)	
LNAV/VNAV DA	1035-½		328 (400-½)	
LNAV MDA	1220-½ 513 (600-½)		1220-1 513 (600-1)	
CIRCLING	1220-1 508 (600-1)		1300-1½ 588 (600-1½) 1320-2 608 (700-2)	

MIRL Rwy 18-36

HIRL Rwy 15-33 and 9-27

REIL Rwy 15, 18, 27, and 36

EC-3, 31 OCT 2024 to 28 NOV 2024

EC-3, 31 OCT 2024 to 28 NOV 2024