

(DARCY7.DARCY) 24305

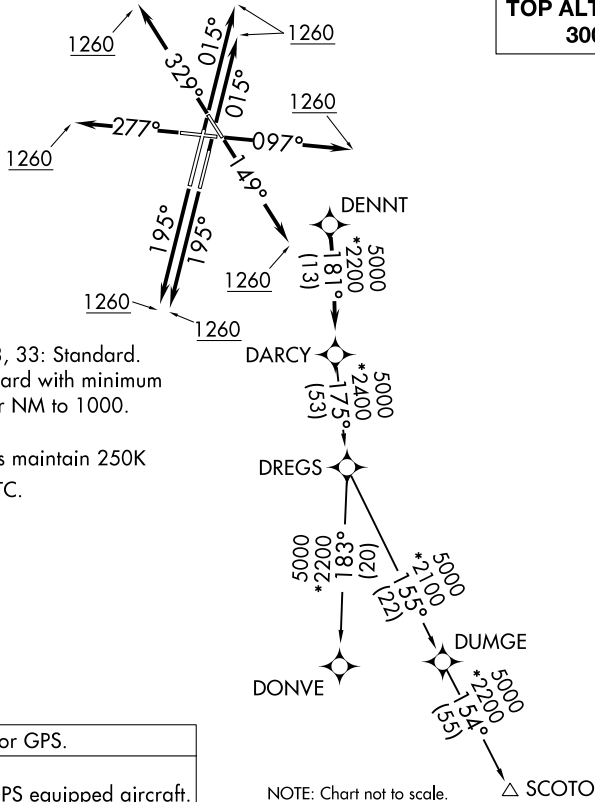
# DARCY SEVEN DEPARTURE (RNAV)

AL-5104 (FAA)

DUPAGE (DPA)  
CHICAGO/WEST CHICAGO, ILLINOIS

CHICAGO DEP CON  
133.5 349.0  
ATIS  
132.075  
GND CON  
121.8  
DUPAGE TOWER  
120.9 257.8

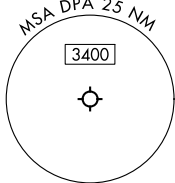
**TOP ALTITUDE:  
3000**



### TAKEOFF MINIMUMS:

Rwys 2L/R, 10, 20L/R, 28, 33: Standard.  
Rwy 15: 300-1 $\frac{3}{8}$  or standard with minimum climb of 205' per NM to 1000.

NOTE: Turbojet departures maintain 250K until advised by ATC.



RNAV 1 - DME/DME/IRU or GPS.  
RADAR required.  
RADAR required for non-GPS equipped aircraft.

### DEPARTURE ROUTE DESCRIPTION

- TAKEOFF RUNWAYS 2L/R:** Climb on heading 015° to 1260, then as assigned by ATC, for vectors to DENNT, thence . . . .
- TAKEOFF RUNWAY 10:** Climb on heading 097° to 1260, then as assigned by ATC, for vectors to DENNT, thence . . . .
- TAKEOFF RUNWAY 15:** Climb on heading 149° to 1260, then as assigned by ATC, for vectors to DENNT, thence . . . .
- TAKEOFF RUNWAYS 20L/R:** Climb on heading 195° to 1260, then as assigned by ATC, for vectors to DENNT, thence . . . .
- TAKEOFF RUNWAY 28:** Climb on heading 277° to 1260, then as assigned by ATC, for vectors to DENNT, thence . . . .
- TAKEOFF RUNWAY 33:** Climb on heading 329° to 1260, then as assigned by ATC, for vectors to DENNT, thence . . . .

. . . . on track 181° to DARC, then on (transition), maintain 3000.  
Expect filed altitude 10 minutes after departure.

**DONVE TRANSITION (DARCY7.DONVE):**  
**SCOTO TRANSITION (DARCY7.SCOTO):**

**DARCY SEVEN DEPARTURE (RNAV)**  
(DARCY7.DARCY) 31OCT24

CHICAGO/WEST CHICAGO, ILLINOIS  
DUPAGE (DPA)

EC-3, 31 OCT 2024 to 28 NOV 2024