

WAAS CH 69204 W33A	APP CRS 336°	Rwy Idg 5950 TDZE 4316 Apt Elev 4317
--	------------------------	---

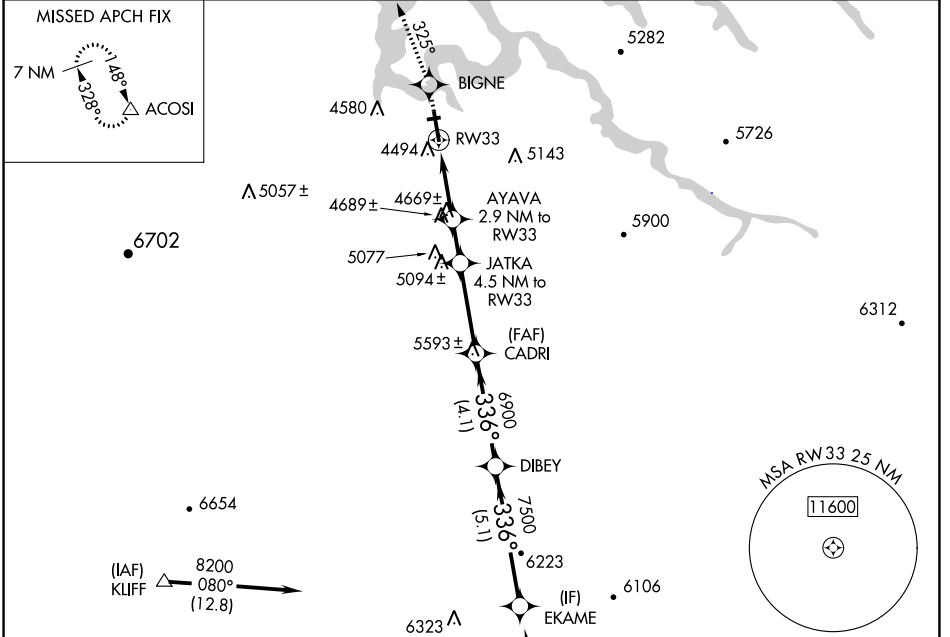
RNAV (GPS) RWY 33

PAGE MUNI (PGA)

For uncompensated Baro-VNAV systems, LNAV/VNAV NA below -23°C (-9°F) or above 41°C (105°F). DME/DME RNP-0.3 NA. Circling NA to Rwy 7-25.

MISSED APPROACH: Climb to 8500 direct BIGNE and via 325° track to ACOSI and hold, continue climb-in-hold to 8500.

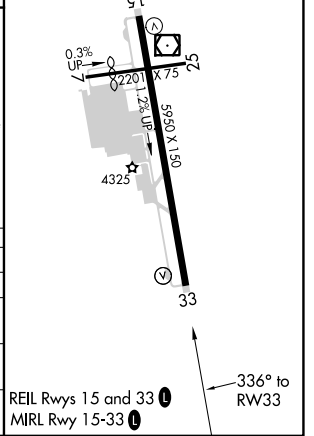
ASOS 120.625	DENVER CENTER 127.55 256.875	UNICOM 122.8 (CTAF)
------------------------	--	-------------------------------



Procedure NA for arrivals at CELAY via V208 southbound.

ELEV 4317 TDZE 4316

8500	BIGNE	ACOSI	VGSI and RNAV glidepath not coincident (VGSI Angle 3.00/TCH 30).				EKAME
↑	325° tr	△	JATKA	CADRI	DIBEY	8200	
*LNAV only.		AYAVA	JATKA			Procedure Turn NA	
*1.8 NM to RW33		2.9 NM to RW33	4.5 NM to RW33			GP 3.00° TCH 50	
	5280	5800	6900	7500	8200		
	1.8 NM	1.1 NM	1.6 NM	3.3 NM	4.1 NM	5.1 NM	
CATEGORY	A	B	C	D			
LPV DA	4566-1		250 (300-1)				
LNAV/VNAV DA	4744-1½		428 (500-1½)				
LNAV MDA	4920-1	604 (700-1)	4920-1¾	604 (700-1¾)	4920-2	604 (700-2)	
CIRCLING	4920-1	603 (700-1)	5080-2¼	763 (800-2¼)	5360-3	1043 (1100-3)	



SW-4, 31 OCT 2024 to 28 NOV 2024

SW-4, 31 OCT 2024 to 28 NOV 2024