

LOC/DME I-HRO <b>111.7</b> Chan <b>54</b>	APP CRS <b>359°</b>	Rwy Idg TDZE <b>1351</b> Apt Elev <b>1365</b>	<b>6161</b>
---	------------------------	---	-------------

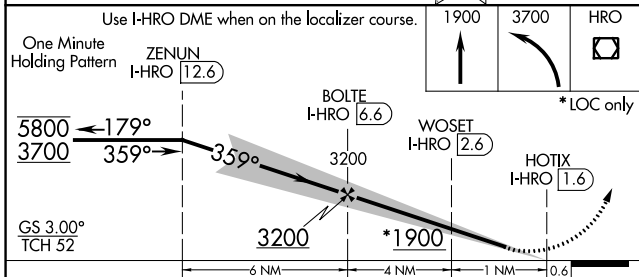
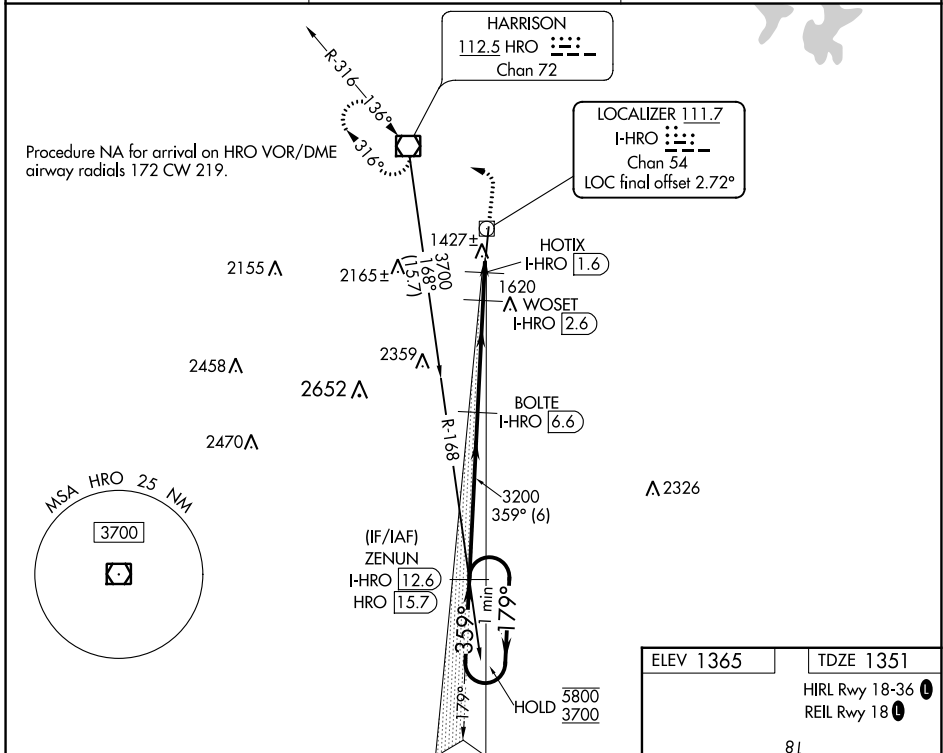
# ILS or LOC RWY 36

BOONE COUNTY (HRO)

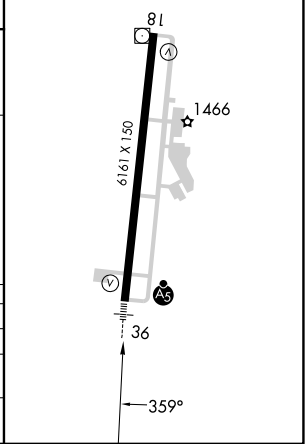
DME required for LOC only. DME or RADAR required for procedure entry.

MALSR MISSED APPROACH: Climb to 1900 then climbing left turn to 3700 direct HRO VOR/DME and hold, continue climb-in hold to 3700.

ASOS <b>121.125</b>	MEMPHIS CENTER <b>126.85 281.55</b>	UNICOM <b>123.0 (CTAF)</b>
------------------------	--	-------------------------------



ELEV 1365	TDZE 1351
HIRL Rwy 18-36	
REIL Rwy 18	



CATEGORY	A	B	C	D
S-ILS 36		1601-½	250 (300-½)	
S-LOC 36		1680-½	329 (400-½)	
CIRCLING	1840-1 475 (500-1)	1860-1 495 (500-1)	2340-3 975 (1000-3)	2560-3 1195 (1200-3)

SC-1, 31 OCT 2024 to 28 NOV 2024

SC-1, 31 OCT 2024 to 28 NOV 2024