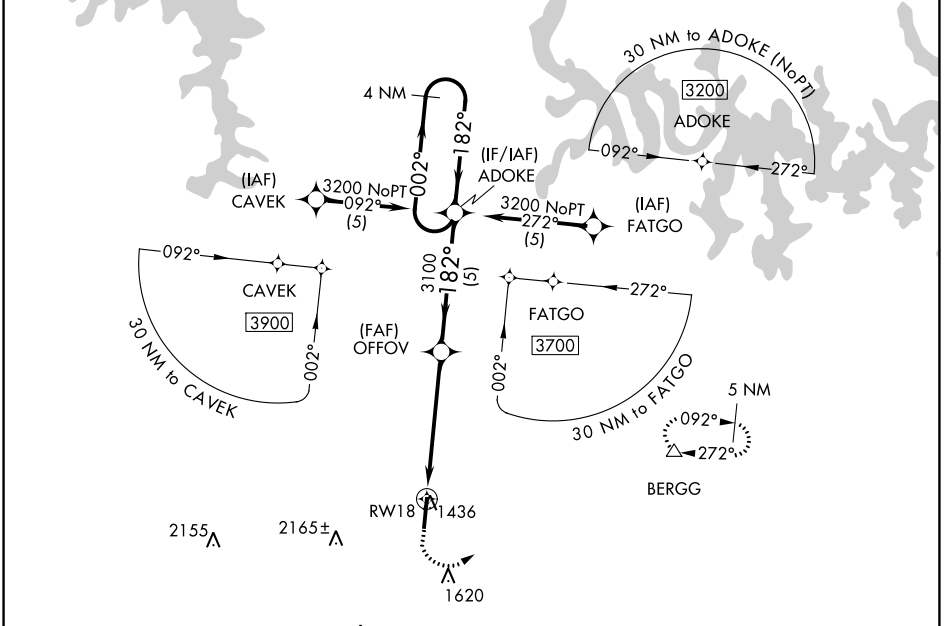


APP CRS	Rwy ldg	6161
182°	TDZE	1365
	Apt Elev	1365

RNAV (GPS) RWY 18

BOONE COUNTY (HRO)

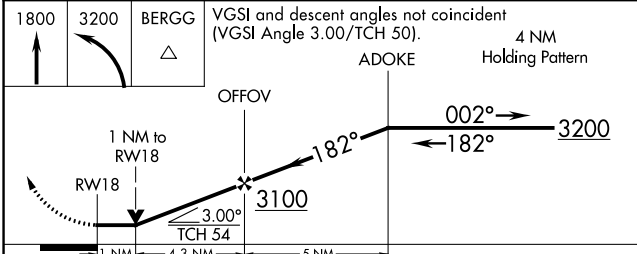
RNP APCH.		MISSED APPROACH: Climb to 1800 then climbing left turn to 3200 direct BERGG and hold.
Rwy 18 helicopter visibility reduction below 3/4 SM NA.		
ASOS	MEMPHIS CENTER	UNICOM
121.125	126.85 281.55	123.0 (CTAF) 0



SC-1, 31 OCT 2024 to 28 NOV 2024

SC-1, 31 OCT 2024 to 28 NOV 2024

1800	3200	BERGG	VGSI and descent angles not coincident (VGSI Angle 3.00/TCH 50).
4 NM Holding Pattern ADOKE			



CATEGORY	A	B	C	D
LNAV MDA	1720-1 355 (400-1)			
CIRCLING	1840-1	1860-1	2340-3	2560-3
	475 (500-1)	495 (500-1)	975 (1000-3)	1195 (1200-3)

