

LOC/DME I-BJI 109.35 Chan 30 (Y)	APP CRS 253°	Rwy Idg TDZE Apt Elev	5700 1389 1391
---	------------------------	-----------------------------	---

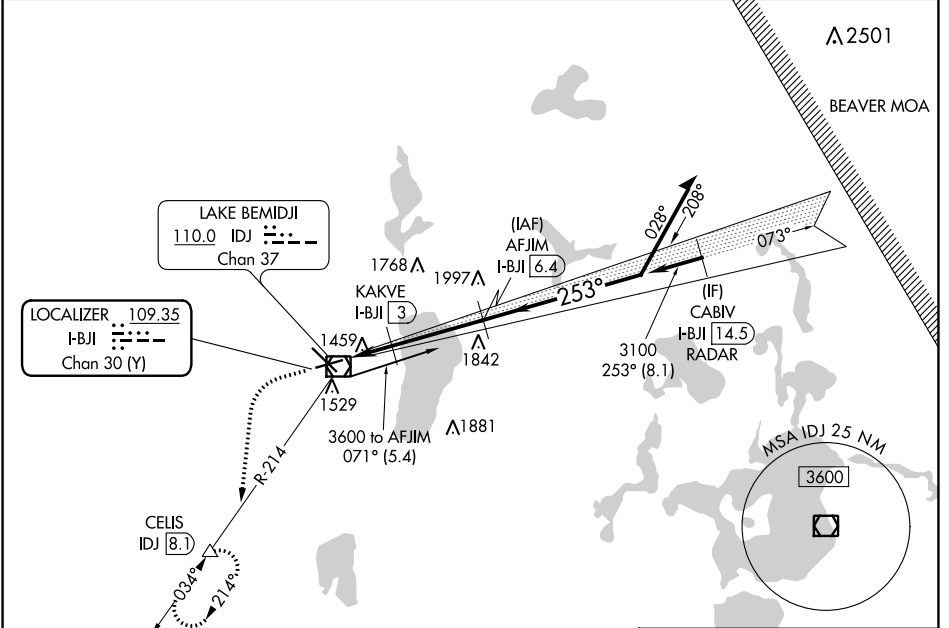
ILS or LOC RWY 25

BEMIDJI RGNL (BJI)

DME required. RADAR required for procedure entry.

MISSED APPROACH: Climb to 3400 then climbing left turn to 3400 on heading 185° and IDJ VOR/DME R-214 to CELIS/IDJ VOR/DME 8.1 DME and hold, continue climb-in-hold to 3400.

AWOS-3 119.275	MINNEAPOLIS CENTER 134.75 251.1	UNICOM 122.8 (CTAF)
--------------------------	---	-------------------------------



NC-1, 31 OCT 2024 to 28 NOV 2024

NC-1, 31 OCT 2024 to 28 NOV 2024

ELEV 1391	D	TDZE 1389		
2300	3400	↑ hdg 185°		
IDJ R-214	CELIS △			
*LOC only				
CATEGORY	A	B	C	D
S-ILS 25		1589-¾	200 (200-¾)	
S-LOC 25		1720-1	331 (400-1)	
CIRCLING	1840-1 449 (500-1)	1860-1 469 (500-1)	1860-1½ 469 (500-1½)	1960-2 569 (600-2)

