

WAAS CH 70711 W34A	APP CRS 340°	Rwy Idg TDZE Apt Elev	7100 1232 1232
----------------------------------------	------------------------	-----------------------------	-------------------------------------------

RNAV (GPS) RWY 34

BRainerd LAKES RGNL (BRD)

RNP APCH.

▼ Baro-VNAV and VDP NA when using Aikin altimeter setting. For uncompensated Baro-VNAV systems, LNAV/VNAV NA below -17°C or above 54°C. When local altimeter setting not received, use Aikin altimeter setting; increase LPV DA to 1484, LNAV/VNAV DA to 1636 and LNAV/VNAV visibility ¼ SM; increase all MDAs 60 feet and LNAV Cats C and D visibility ¼ SM. For inop ALS when using Aikin altimeter setting, increase LNAV Cat D visibility to 1½ SM.

MALSR

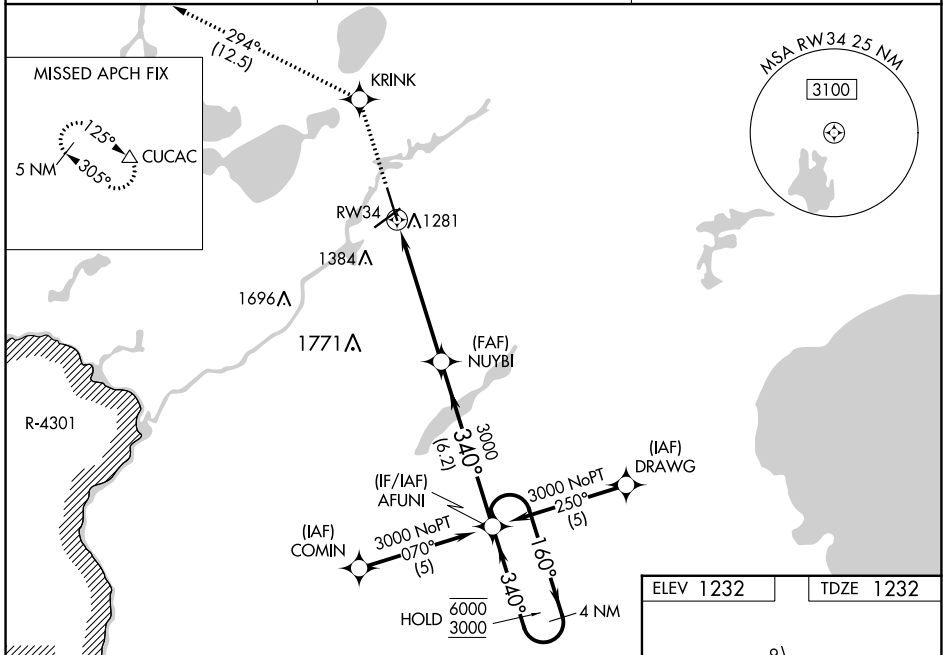


MISSED APPROACH:
Climb to 3300 direct KRINK and on track 294° to CUCAC and hold.

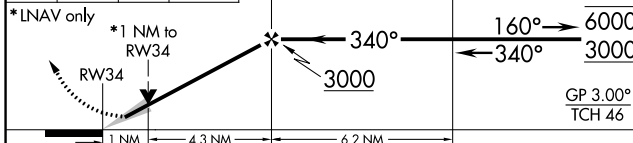
ASOS 126.775

MINNEAPOLIS CENTER 118.05 239.0

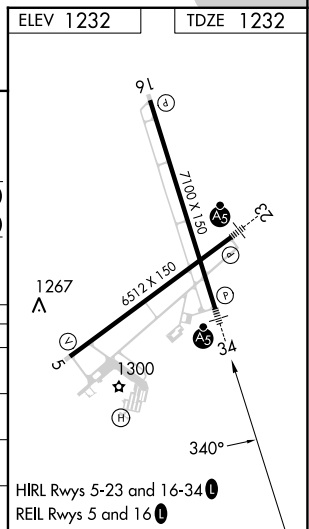
UNICOM 122.7(CTAF) 0



3300	KRINK	tr 294°	CUCAC	NUYBI	AFUNI	4 NM Holding Pattern
------	-------	---------	-------	-------	-------	----------------------



CATEGORY	A	B	C	D
LPV DA		1432-½	200 (200-½)	
LNAV/VNAV DA		1584-¾	352 (400-¾)	
LNAV MDA	1620-½	388 (400-½)	1620-5/8 388 (400-5/8)	1620-1 388 (400-1)
C CIRCLING	1760-1	528 (600-1)	1760-1½ 528 (600-1½)	1860-2 628 (700-2)



NC-1, 31 OCT 2024 to 28 NOV 2024

NC-1, 31 OCT 2024 to 28 NOV 2024