

# BORRN SIX DEPARTURE (RNAV)

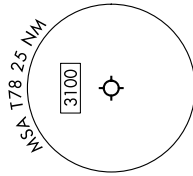
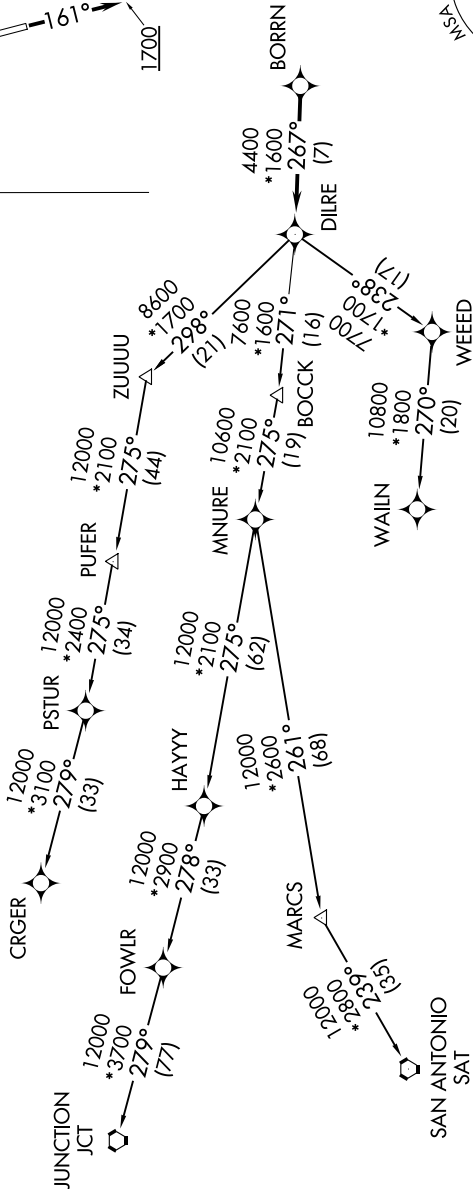
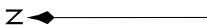
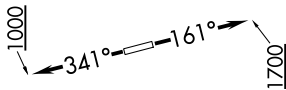
**TOP ALTITUDE:  
ASSIGNED BY ATC**

RNAV 1 - DME/DME/IRU or GPS.

RADAR required.

**TAKEOFF MINIMUMS**  
Rwys 16, 34: Standard with minimum  
climb of 500'/NM to 580.

CTAF  
122.9  
HOUSTON DEP CON  
119.7 281.4



**NOTE:** CRGR-TRANSITION ATC assigned only  
for aircraft departing 54T, AXH, EFD, GLS,  
HPY, IWS, LBX, LVJ, SGR, TME, T00, T41.

(NARRATIVE ON FOLLOWING PAGE)

NOTE: Chart not to scale.

# BORRN SIX DEPARTURE (RNAV)