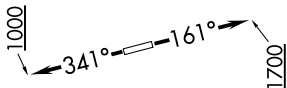


# KARR SEVEN DEPARTURE (RNAV)

**TOP ALTITUDE:  
ASSIGNED BY ATC**



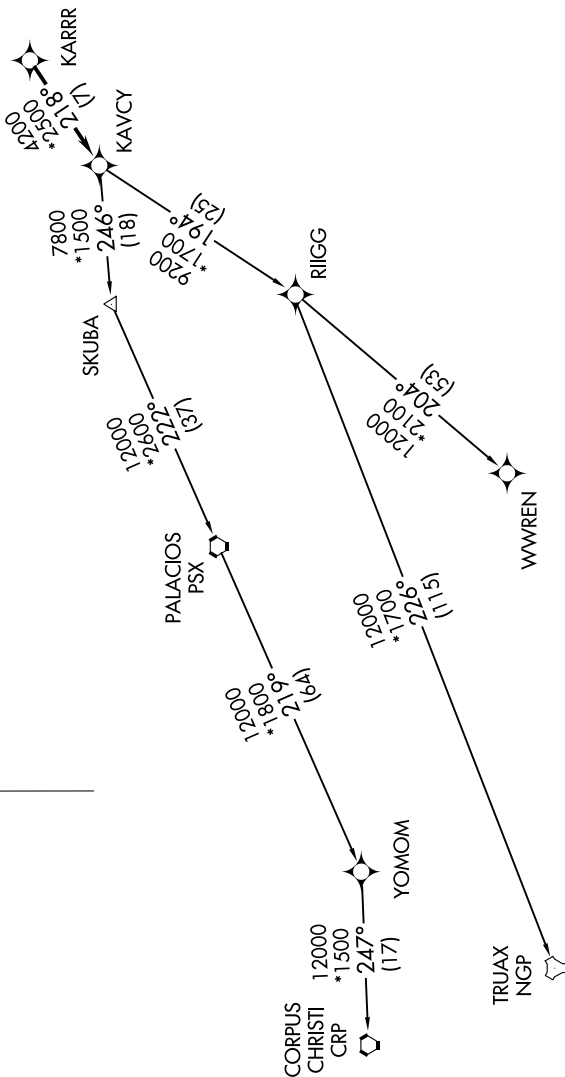
RNAV-1 DME/DME/IRU or GPS.
RADAR required.

**TAKEOFF MINIMUMS**

Rwys 16, 34: Standard with minimum climb of 500' per NM to 580.



CTAF  
122.9  
HOUSTON DEP CON  
119.7 281.4



(NARRATIVE ON FOLLOWING PAGE)

NOTE: Chart not to scale.

# KARR SEVEN DEPARTURE (RNAV)