

WAAS CH <b>78130</b> <b>W16A</b>	APP CRS <b>161°</b>	Rwy Idg TDZE Apt Elev	<b>3801</b> <b>70</b> <b>70</b>
--	------------------------	-----------------------------	---------------------------------------

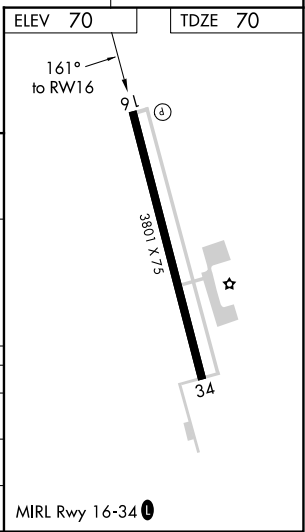
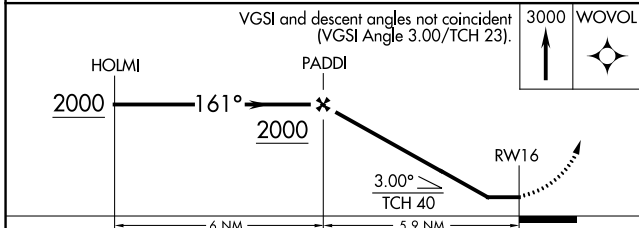
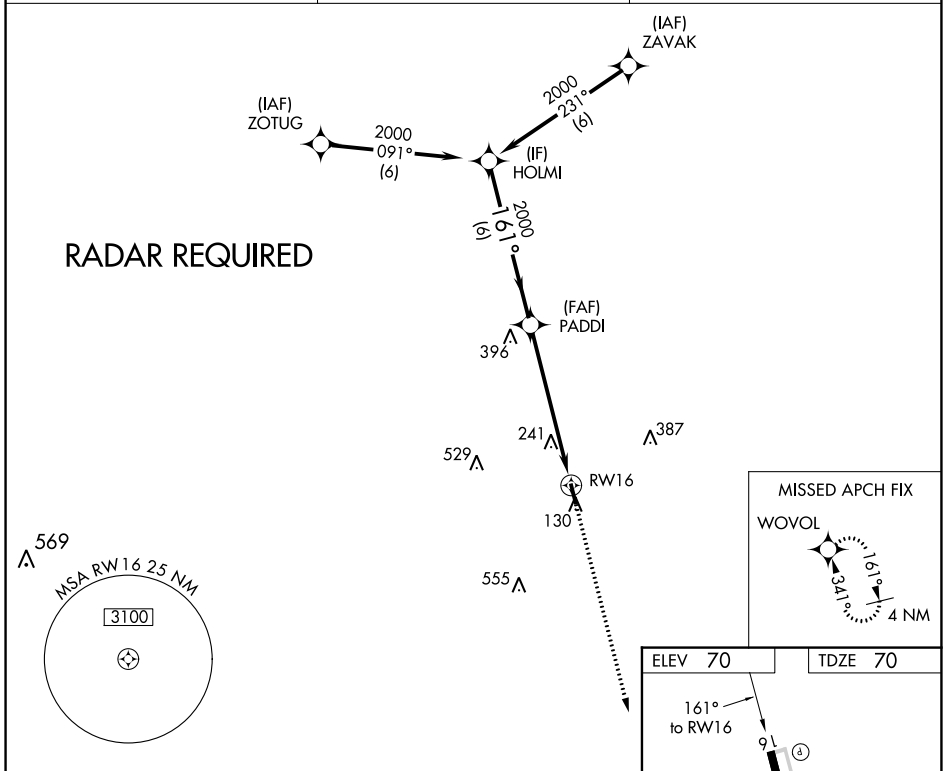
# RNAV (GPS) RWY 16

LIBERTY MUNI (T78)

**Procedure NA at night. Use George Bush Intcntl/Houston altimeter setting. DME/DME RNP-0.3 NA.**  
**Helicopter visibility reduction below 1 SM NA.**

**MISSED APPROACH:** Climb to 3000 direct WOVOL and hold.

AWOS-3PT <b>120.775</b>	HOUSTON APP CON <b>119.7 281.4</b>	CTAF <b>122.9</b>
----------------------------	---------------------------------------	----------------------



CATEGORY	A	B	C	D
IP MDA	620-1	550 (600-1)		NA
RNAV MDA	640-1	570 (600-1)		NA
CIRCLING	640-1	570 (600-1)		NA

SC-5, 31 OCT 2024 to 28 NOV 2024

SC-5, 31 OCT 2024 to 28 NOV 2024