

(STYCK8.STYCK) 21280

AL-5196 (FAA)

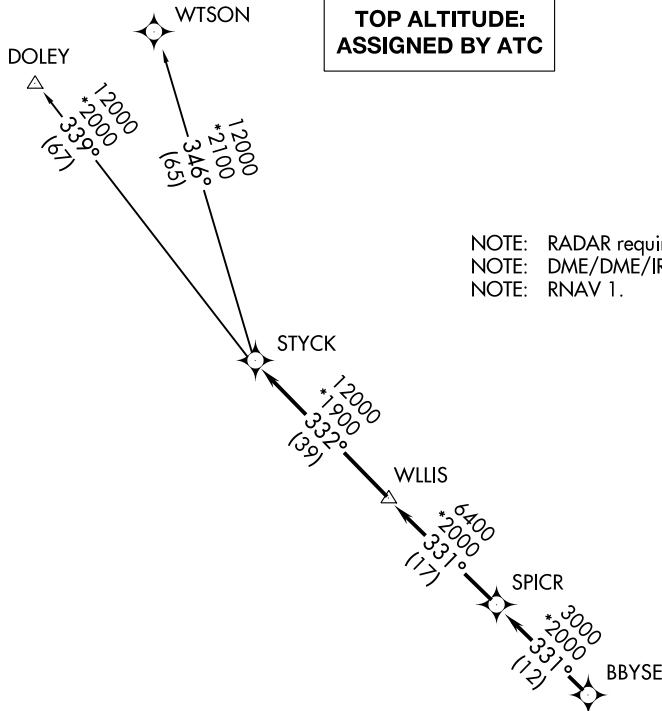
LIBERTY MUNI (T78)

STYCK EIGHT DEPARTURE (RNAV)

LIBERTY, TEXAS

**TOP ALTITUDE:
ASSIGNED BY ATC**

CTAF
122.9
HOUSTON DEP CON
119.7 281.4



NOTE: RADAR required.
NOTE: DME/DME/IRU or GPS required.
NOTE: RNAV 1.

TAKEOFF MINIMUMS

Rwys 16, 34: Standard with minimum climb of 500' per NM to 580.



NOTE: Chart not to scale.



DEPARTURE ROUTE DESCRIPTION

TAKEOFF RUNWAY 16: Climb on heading 161° to 1700 for RADAR vectors to BBYSE, thence. . .

TAKEOFF RUNWAY 34: Climb on heading 341° to 1000 for RADAR vectors to BBYSE, thence. . .

. . . on track 331° to SPICR, then on track 331° to WLLIS, then on track 332° to STYCK, then on (transition). Maintain ATC assigned altitude. Expect filed altitude 10 minutes after departure.

DOLEY TRANSITION (STYCK8.DOLEY)

WTSON TRANSITION (STYCK8.WTSON)

STYCK EIGHT DEPARTURE (RNAV)

(STYCK8.STYCK) 07OCT21

LIBERTY, TEXAS

LIBERTY MUNI (T78)

SC-5, 31 OCT 2024 to 28 NOV 2024

SC-5, 31 OCT 2024 to 28 NOV 2024