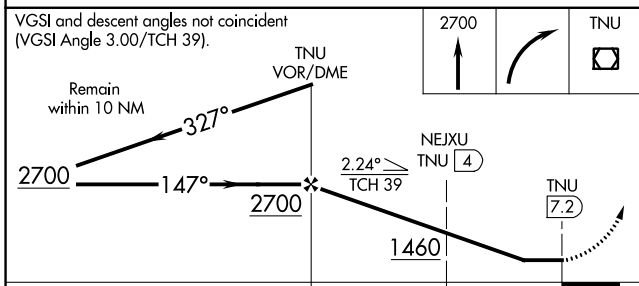
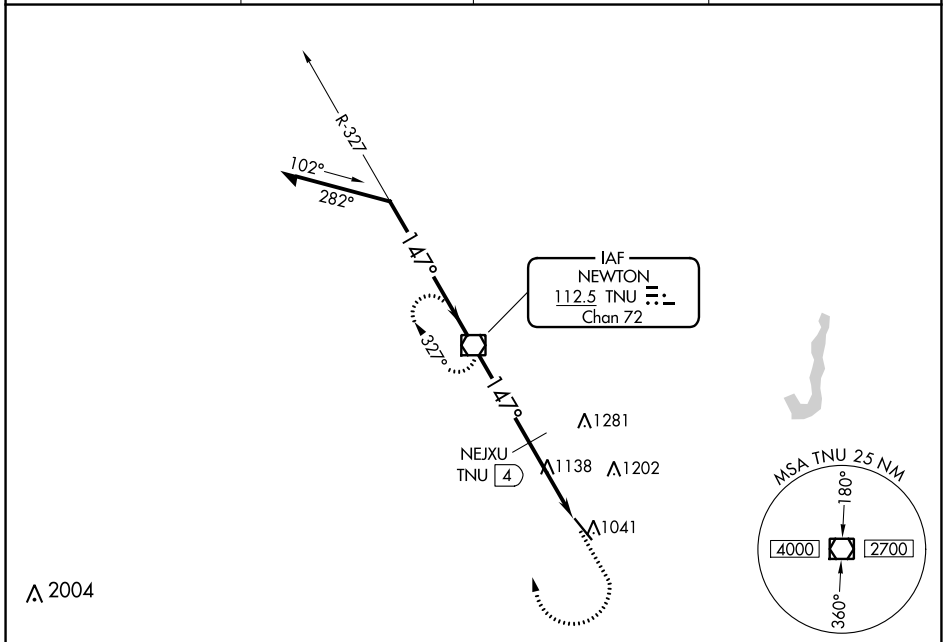


VOR/DME TNU <b>112.5</b> Chan <b>72</b>	APP CRS <b>147°</b>	Rwy Idg <b>5600</b> TDZE <b>953</b> Apt Elev <b>953</b>
---	------------------------	---

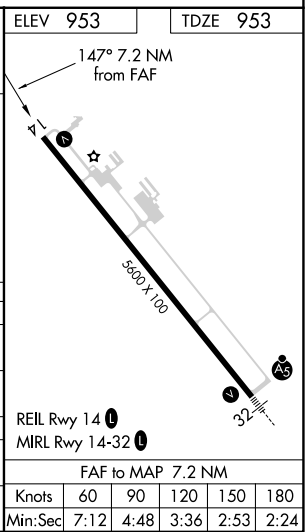
# VOR RWY 14

NEWTON MUNI-EARL JOHNSON FLD (TNU)

<b>▽</b> <b>▲</b> Rwy 14 helicopter visibility reduction below ¾ SM NA.	MISSED APPROACH: Climb to 2700 then right turn direct TNU VOR/DME and hold.		
AWOS-3 <b>132.275</b>	DES MOINES APP CON <b>123.9 307.15</b>	CLNC DEL <b>126.3</b>	UNICOM <b>122.8 (CTAF) 0</b>



CATEGORY	A	B	C	D
S-14	1460-1	507 (600-1)	1460-1⅜ 507 (600-1⅜)	1460-1½ 507 (600-1½)
<b>C</b> CIRCLING	1460-1	507 (600-1)	1520-1½ 567 (600-1½)	1600-2 647 (700-2)
NEXJU DME MINIMUMS				
S-14	1400-1	447 (500-1)	1400-1⅜ 447 (500-1⅜)	1400-1½ 447 (500-1½)
<b>C</b> CIRCLING	1420-1 467 (500-1)	1440-1 487 (500-1)	1520-1½ 567 (600-1½)	1600-2 647 (700-2)



NC-3, 31 OCT 2024 to 28 NOV 2024

NC-3, 31 OCT 2024 to 28 NOV 2024