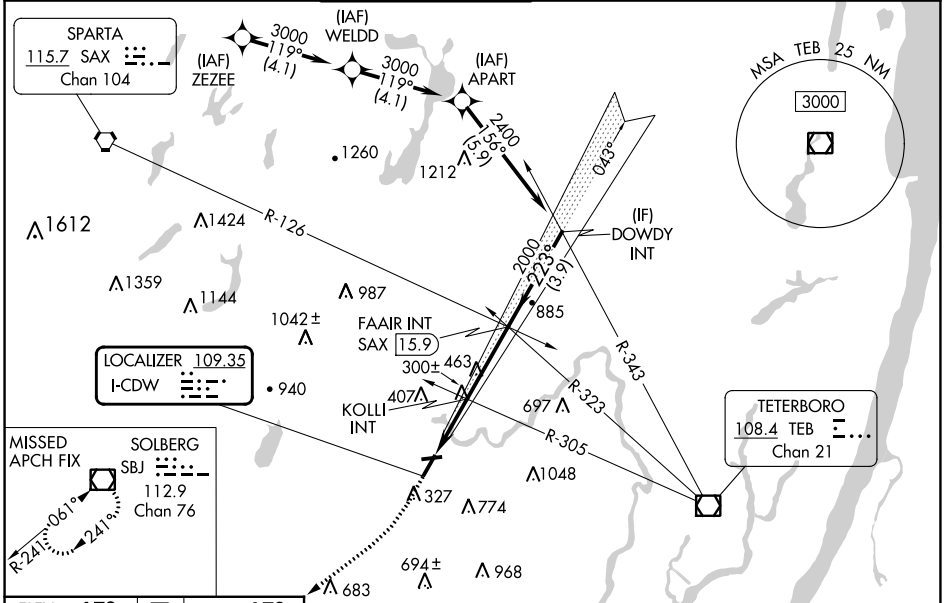


|               |             |          |             |
|---------------|-------------|----------|-------------|
| LOC I-CDW     | APP CRS     | Rwy Idg  | <b>4042</b> |
| <b>109.35</b> | <b>223°</b> | TDZE     | <b>172</b>  |
|               |             | Apt Elev | <b>172</b>  |

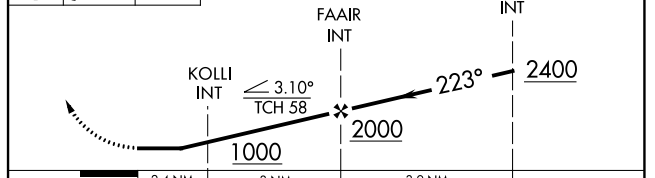
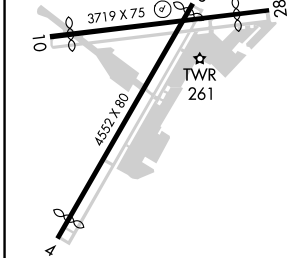
# LOC RWY 22

ESSEX COUNTY (CDW)

|   |                    |                       |              |  |               |
|---|--------------------|-----------------------|--------------|--|---------------|
| Aircraft not GPS equipped - RADAR required for procedure entry.   |                    |                       |              | MISSED APPROACH:<br>Climb to 600 then climbing right turn to 2200 direct SBJ VOR/DME and hold. |               |
| ⚠ NA Rwy 22 helicopter visibility required below 1 SM NA. When local altimeter setting not received, use Newark altimeter setting and increase all MDA 60 feet and S-22 Cat A and Circling Cat C visibility ¼ SM. KOLLI INT minimums: increase all MDA 60 feet and increase S-22 Cats C/D and Circling Cats A and C visibility ¼ SM. Circling Rwy 10, 28 NA at night. |                    |                       |              |  |               |
| ATIS  | NEWARK APP CON     | CALDWELL TOWER ★      | GND CON      | CLNC DEL   | UNICOM        |
| <b>135.5</b>  | <b>127.6 379.9</b> | <b>119.8 (CTAF) 0</b> | <b>121.9</b> | <b>121.1</b>   | <b>122.95</b> |



|          |   |          |     |      |     |  |
|----------|---|----------|-----|------|-----|--|
| ELEV 172 | D | TDZE 172 | 600 | 2200 | SBJ | VGSI and descent angles not coincident (VGSI Angle 3.00/TCH 42). |
|----------|---|----------|-----|------|-----|--|



| CATEGORY           | A                       | B                       | C                        | D                       |
|--------------------|-------------------------|-------------------------|--------------------------|-------------------------|
| S-LOC 22           | 1000-1<br>828 (900-1)   | 1000-1¼<br>828 (900-1¼) | 1000-2½<br>828 (900-2½)  | 828 (900-2½)            |
| CIRCLING           | 1000-1¼<br>828 (900-1¼) | 1040-1¼<br>868 (900-1¼) | 1100-2¾<br>928 (1000-2¾) | 1400-3<br>1228 (1300-3) |
| KOLLI INT MINIMUMS |                         |                         |                          |                         |
| S-LOC 22           | 560-1                   | 388 (400-1)             | 560-1½                   | 388 (400-1½)            |
| CIRCLING           | 960-1<br>788 (800-1)    | 1040-1¼<br>868 (900-1¼) | 1100-2¾<br>928 (1000-2¾) | 1400-3<br>1228 (1300-3) |

REIL Rwy 22 1  
MIRL Rwy 10-28 1  
HIRL Rwy 4-22 1

FAF to MAP 5.4 NM

|         |      |      |      |      |      |
|---------|------|------|------|------|------|
| Knots   | 60   | 90   | 120  | 150  | 180  |
| Min:Sec | 5:24 | 3:36 | 2:42 | 2:10 | 1:48 |

NE-2, 31 OCT 2024 to 28 NOV 2024

NE-2, 31 OCT 2024 to 28 NOV 2024